

ELISA Kit for Endothelin 1 (EDN1)

Catalog No: tcue1376



Available Sizes

Size: 96T



Specifications

Research Area:

Endocrinology; Cardiovascular biology;

Species Reactivity:

Cavia (Guinea pig)

Sample Type:

Serum, plasma, tissue homogenates, cell lysates, cell culture supernates and other biological fluids.

Sensitivity:

The minimum detectable dose of this kit is typically less than 2.82pg/mL

Detection Range:

6.17-500pg/mL

Assay Time:

2h

Detection Method:

Enzyme-linked immunosorbent assay for Antigen Detection.

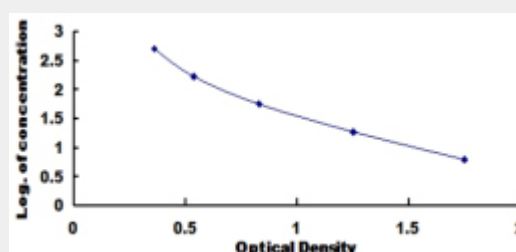
Tested Application:

ELISA

Test Principle

This assay employs the competitive inhibition enzyme immunoassay technique. A monoclonal antibody specific to Endothelin 1 (EDN1) has been pre-coated onto a microplate. A competitive inhibition reaction is launched between biotin labeled Endothelin 1 (EDN1) and unlabeled Endothelin 1 (EDN1) (Standards or samples) with the pre-coated antibody specific to Endothelin 1 (EDN1). After incubation the unbound conjugate is washed off. Next, avidin conjugated to Horseradish Peroxidase (HRP) is added to each microplate well and incubated. The amount of bound HRP conjugate is reverse proportional to the concentration of Endothelin 1

(EDN1) in the sample. After addition of the substrate solution, the intensity of color developed is reverse proportional to the concentration of Endothelin 1 (EDN1) in the sample.



All products are for RESEARCH USE ONLY. Not for diagnostic & therapeutic purposes!