

# ELISA Kit for Procollagen I C-Terminal Propeptide (PICP)

Catalog No: **tcue1323**



## Available Sizes

---

**Size:** 96T



## Specifications

---

**Research Area:**

Metabolic pathway;Hepatology;Bone metabolism;

**Species Reactivity:**

Homo sapiens (Human)

**Sample Type:**

serum, plasma, tissue homogenates, cell lysates, cell culture supernates and other biological fluids

**Sensitivity:**

The minimum detectable dose of this kit is typically less than 0.131ng/mL

**Detection Range:**

0.312-20ng/mL

**Assay Time:**

3h

**Detection Method:**

Enzyme-linked immunosorbent assay for Antigen Detection.

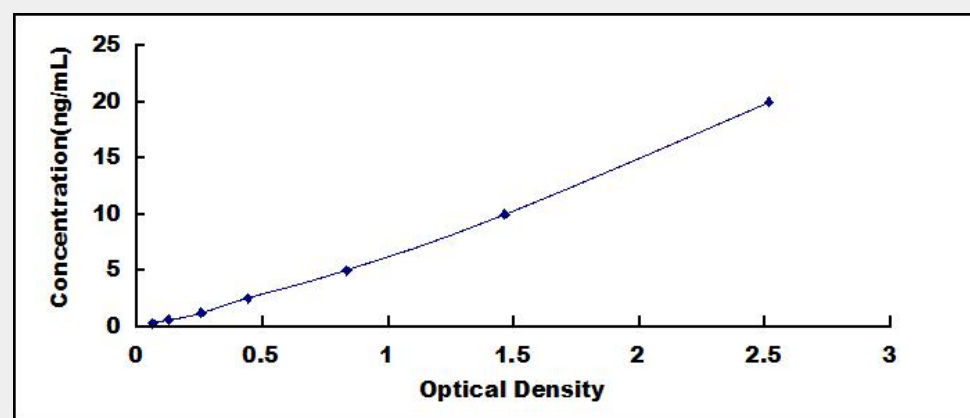
**Tested Application:**

ELISA

## Test Principle

The test principle applied in this kit is Sandwich enzyme immunoassay. The microtiter plate provided in this kit has been pre-coated with an antibody specific to Procollagen I C-Terminal Propeptide (PICP). Standards or samples are then added to the appropriate

microtiter plate wells with a biotin-conjugated antibody specific to Procollagen I C-Terminal Propeptide (PICP). Next, Avidin conjugated to Horseradish Peroxidase (HRP) is added to each microplate well and incubated. After TMB substrate solution is added, only those wells that contain Procollagen I C-Terminal Propeptide (PICP), biotin-conjugated antibody and enzyme-conjugated Avidin will exhibit a change in color. The enzyme-substrate reaction is terminated by the addition of sulphuric acid solution and the color change is measured spectrophotometrically at a wavelength of  $450\text{nm} \pm 10\text{nm}$ . The concentration of Procollagen I C-Terminal Propeptide (PICP) in the samples is then determined by comparing the O.D. of the samples to the standard curve.



All products are for RESEARCH USE ONLY. Not for diagnostic & therapeutic purposes!