

ELISA Kit for Phospholipase A2, Calcium Independent (iPLA2)

Catalog No: tcue1303



Available Sizes

Size: 96T



Specifications

Research Area:

Enzyme & Kinase;Metabolic pathway;

Species Reactivity:

Homo sapiens (Human)

Sample Type:

serum, plasma and other biological fluids

Sensitivity:

The minimum detectable dose of this kit is typically less than 30pg/mL

Detection Range:

78-5000pg/mL

Assay Time:

3h

Detection Method:

Enzyme-linked immunosorbent assay for Antigen Detection.

Tested Application:

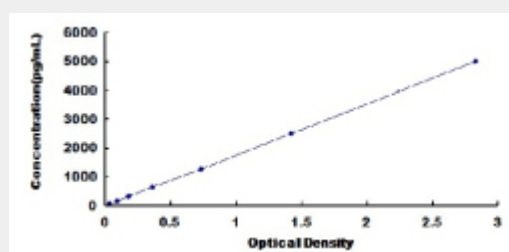
ELISA

SwissProt:

O60733

Test Principle

The test principle applied in this kit is Sandwich enzyme immunoassay. The microtiter plate provided in this kit has been pre-coated with an antibody specific to Phospholipase A2, Calcium Independent (iPLA2). Standards or samples are then added to the appropriate microtiter plate wells with a biotin-conjugated antibody specific to Phospholipase A2, Calcium Independent (iPLA2). Next, Avidin conjugated to Horseradish Peroxidase (HRP) is added to each microplate well and incubated. After TMB substrate solution is added, only those wells that contain Phospholipase A2, Calcium Independent (iPLA2), biotin-conjugated antibody and enzyme-conjugated Avidin will exhibit a change in color. The enzyme-substrate reaction is terminated by the addition of sulphuric acid solution and the color change is measured spectrophotometrically at a wavelength of $450\text{nm} \pm 10\text{nm}$. The concentration of Phospholipase A2, Calcium Independent (iPLA2) in the samples is then determined by comparing the O.D. of the samples to the standard curve.



All products are for RESEARCH USE ONLY. Not for diagnostic & therapeutic purposes!