

ELISA Kit for Anti-Mullerian Hormone (AMH)

Catalog No: tcue1279



Available Sizes

Size: 96T



Specifications

Research Area:

Endocrinology; Reproductive science; Hormone metabolism;

Species Reactivity:

Homo sapiens (Human)

Sample Type:

serum, plasma, tissue homogenates, cell lysates, cell culture supernates and other biological fluids

Sensitivity:

The minimum detectable dose of this kit is typically less than 83.3pg/mL

Detection Range:

185.2-15000pg/mL

Assay Time:

2h

Detection Method:

Enzyme-linked immunosorbent assay for Antigen Detection.

Tested Application:

ELISA

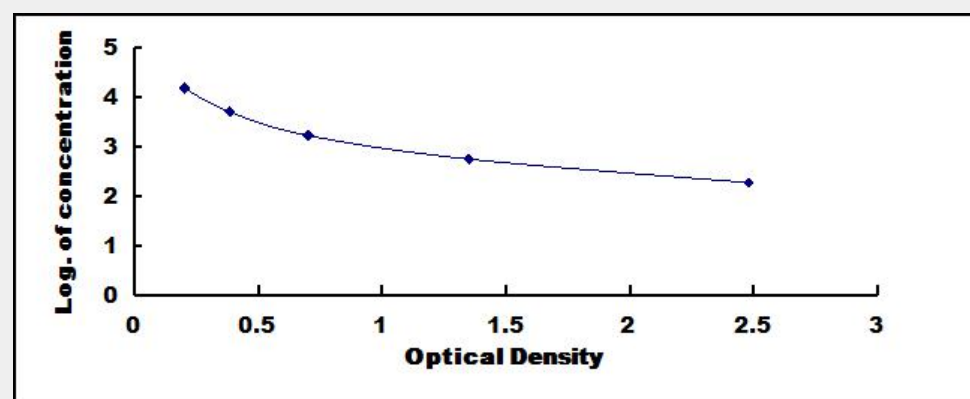
SwissProt:

P03971

Test Principle

This assay employs the competitive inhibition enzyme immunoassay technique. A monoclonal antibody specific to Anti-Mullerian

Hormone (AMH) has been pre-coated onto a microplate. A competitive inhibition reaction is launched between biotin labeled Anti-Mullerian Hormone (AMH) and unlabeled Anti-Mullerian Hormone (AMH) (Standards or samples) with the pre-coated antibody specific to Anti-Mullerian Hormone (AMH). After incubation the unbound conjugate is washed off. Next, avidin conjugated to Horseradish Peroxidase (HRP) is added to each microplate well and incubated. The amount of bound HRP conjugate is reverse proportional to the concentration of Anti-Mullerian Hormone (AMH) in the sample. After addition of the substrate solution, the intensity of color developed is reverse proportional to the concentration of Anti-Mullerian Hormone (AMH) in the sample.



All products are for RESEARCH USE ONLY. Not for diagnostic & therapeutic purposes!