

ELISA Kit for Interferon Beta (IFNb)

Catalog No: tcue1278



Available Sizes

Size: 96T



Specifications

Research Area:

Cytokine;Tumor immunity;Infection immunity;

Species Reactivity:

Rattus norvegicus (Rat)

Sample Type:

serum, plasma, tissue homogenates, cell lysates, cell culture supernates and other biological fluids

Sensitivity:

The minimum detectable dose of this kit is typically less than 2.9pg/mL

Detection Range:

7.8-500pg/mL

Assay Time:

3h

Detection Method:

Enzyme-linked immunosorbent assay for Antigen Detection.

Tested Application:

ELISA

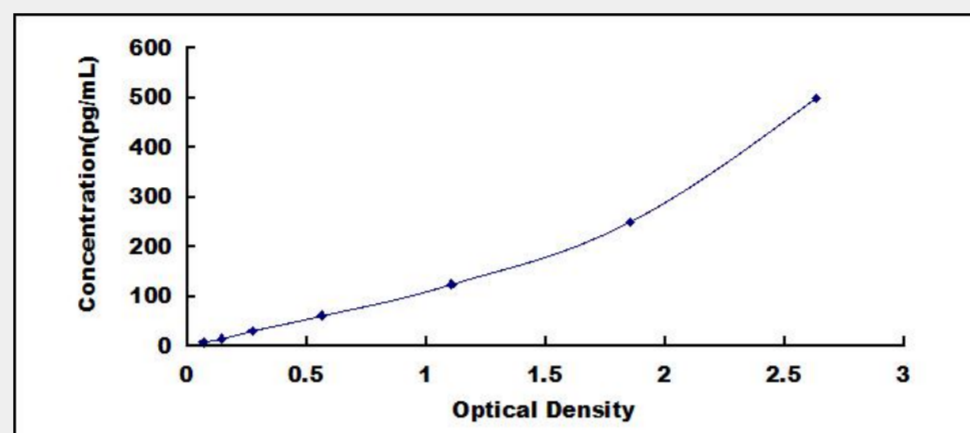
SwissProt:

P70499

Test Principle

The test principle applied in this kit is Sandwich enzyme immunoassay. The microtiter plate provided in this kit has been pre-coated

with an antibody specific to Interferon Beta (IFN β). Standards or samples are then added to the appropriate microtiter plate wells with a biotin-conjugated antibody specific to Interferon Beta (IFN β). Next, Avidin conjugated to Horseradish Peroxidase (HRP) is added to each microplate well and incubated. After TMB substrate solution is added, only those wells that contain Interferon Beta (IFN β), biotin-conjugated antibody and enzyme-conjugated Avidin will exhibit a change in color. The enzyme-substrate reaction is terminated by the addition of sulphuric acid solution and the color change is measured spectrophotometrically at a wavelength of 450nm \pm 10nm. The concentration of Interferon Beta (IFN β) in the samples is then determined by comparing the O.D. of the samples to the standard curve.



All products are for RESEARCH USE ONLY. Not for diagnostic & therapeutic purposes!