

# ELISA Kit for Cyanocobalamin (CNCbl)

Catalog No: tcue1189



## Available Sizes

**Size:** 96T



## Specifications

### Research Area:

Metabolic pathway; Nutrition metabolism;

### Species Reactivity:

Pan-species (General)

### Sample Type:

serum, plasma, tissue homogenates and other biological fluids

### Sensitivity:

The minimum detectable dose of this kit is typically less than 50.5pg/mL

### Detection Range:

123.5-10000pg/mL

### Assay Time:

2h

### Detection Method:

Enzyme-linked immunosorbent assay for Antigen Detection.

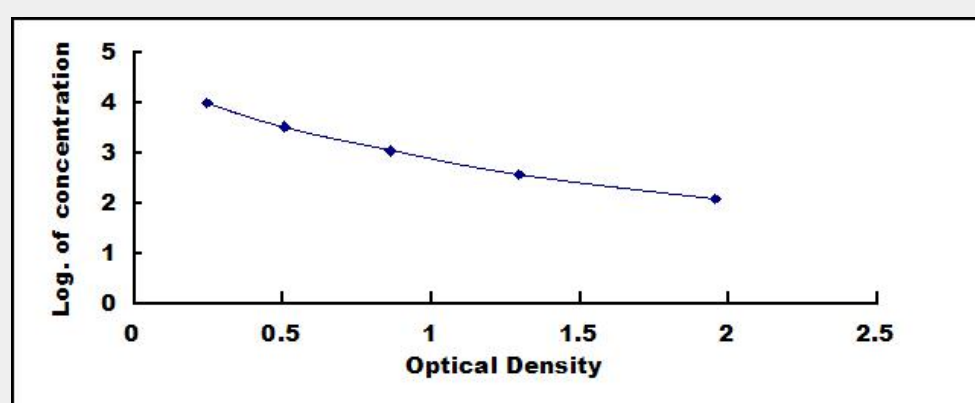
### Tested Application:

ELISA

## Test Principle

This assay employs the competitive inhibition enzyme immunoassay technique. A monoclonal antibody specific to Cyanocobalamin (CNCbl) has been pre-coated onto a microplate. A competitive inhibition reaction is launched between biotin labeled Cyanocobalamin (CNCbl) and unlabeled Cyanocobalamin (CNCbl) (Standards or samples) with the pre-coated antibody specific to Cyanocobalamin (CNCbl). After incubation the unbound conjugate is washed off. Next, avidin conjugated to Horseradish Peroxidase (HRP) is added to each microplate well and incubated. The amount of bound HRP conjugate is reverse proportional to the concentration of

Cyanocobalamin (CNCbl) in the sample. After addition of the substrate solution, the intensity of color developed is reverse proportional to the concentration of Cyanocobalamin (CNCbl) in the sample.



All products are for RESEARCH USE ONLY. Not for diagnostic & therapeutic purposes!