

# ELISA Kit for Cross Linked C-Telopeptide Of Type I Collagen (CTXI)

## Catalog No: tcue1073



### Available Sizes

---

**Size:** 96T



### Specifications

---

**Research Area:**

Metabolic pathway; Bone metabolism;

**Species Reactivity:**

Rattus norvegicus (Rat)

**Sample Type:**

serum, plasma and other biological fluids

**Sensitivity:**

The minimum detectable dose of this kit is typically less than 48.1pg/mL

**Detection Range:**

123.5-10000pg/mL

**Assay Time:**

2h

**Detection Method:**

Enzyme-linked immunosorbent assay for Antigen Detection.

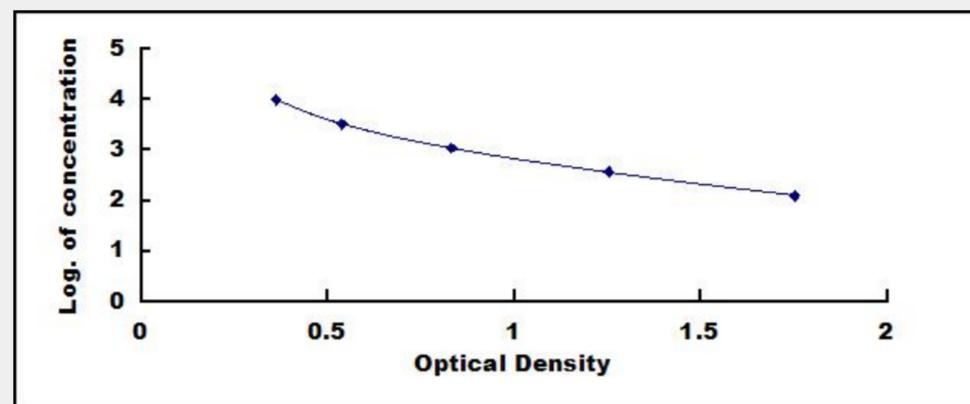
**Tested Application:**

ELISA

### Test Principle

This assay employs the competitive inhibition enzyme immunoassay technique. A monoclonal antibody specific to Cross Linked C-Telopeptide Of Type I Collagen (CTXI) has been pre-coated onto a microplate. A competitive inhibition reaction is launched between

biotin labeled Cross Linked C-Telopeptide Of Type I Collagen (CTXI) and unlabeled Cross Linked C-Telopeptide Of Type I Collagen (CTXI) (Standards or samples) with the pre-coated antibody specific to Cross Linked C-Telopeptide Of Type I Collagen (CTXI). After incubation the unbound conjugate is washed off. Next, avidin conjugated to Horseradish Peroxidase (HRP) is added to each microplate well and incubated. The amount of bound HRP conjugate is reverse proportional to the concentration of Cross Linked C-Telopeptide Of Type I Collagen (CTXI) in the sample. After addition of the substrate solution, the intensity of color developed is reverse proportional to the concentration of Cross Linked C-Telopeptide Of Type I Collagen (CTXI) in the sample.



All products are for RESEARCH USE ONLY. Not for diagnostic & therapeutic purposes!