

ELISA Kit for Immunoglobulin G2 (IgG2)

Catalog No: tcue954



Available Sizes

Size: 96T



Specifications

Research Area:

Infection immunity; Immune molecule;

Species Reactivity:

Homo sapiens (Human)

Sample Type:

Serum, plasma and other biological fluids

Sensitivity:

The minimum detectable dose of this kit is typically less than 0.52ug/mL

Detection Range:

1.23-100ug/mL

Assay Time:

2h

Detection Method:

Enzyme-linked immunosorbent assay for Antigen Detection.

Tested Application:

ELISA

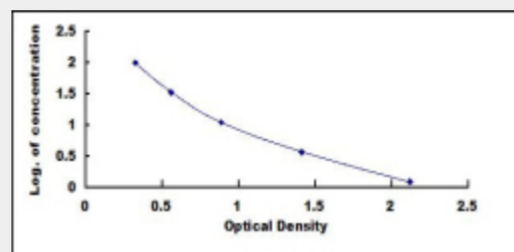
SwissProt:

P01859

Test Principle

This assay employs the competitive inhibition enzyme immunoassay technique. A monoclonal antibody specific to Immunoglobulin

G2 (IgG2) has been pre-coated onto a microplate. A competitive inhibition reaction is launched between biotin labeled Immunoglobulin G2 (IgG2) and unlabeled Immunoglobulin G2 (IgG2) (Standards or samples) with the pre-coated antibody specific to Immunoglobulin G2 (IgG2). After incubation the unbound conjugate is washed off. Next, avidin conjugated to Horseradish Peroxidase (HRP) is added to each microplate well and incubated. The amount of bound HRP conjugate is reverse proportional to the concentration of Immunoglobulin G2 (IgG2) in the sample. After addition of the substrate solution, the intensity of color developed is reverse proportional to the concentration of Immunoglobulin G2 (IgG2) in the sample.



All products are for RESEARCH USE ONLY. Not for diagnostic & therapeutic purposes!