

# ELISA Kit for Adrenomedullin (ADM)

Catalog No: tcue876



## Available Sizes

**Size:** 96T



## Specifications

**Research Area:**

Endocrinology;Hormone metabolism;

**Species Reactivity:**

Mus musculus (Mouse)

**Sample Type:**

serum, plasma and other biological fluids

**Sensitivity:**

The minimum detectable dose of this kit is typically less than 5.29pg/mL

**Detection Range:**

12.35-1000pg/mL

**Assay Time:**

2h

**Detection Method:**

Enzyme-linked immunosorbent assay for Antigen Detection.

**Tested Application:**

ELISA

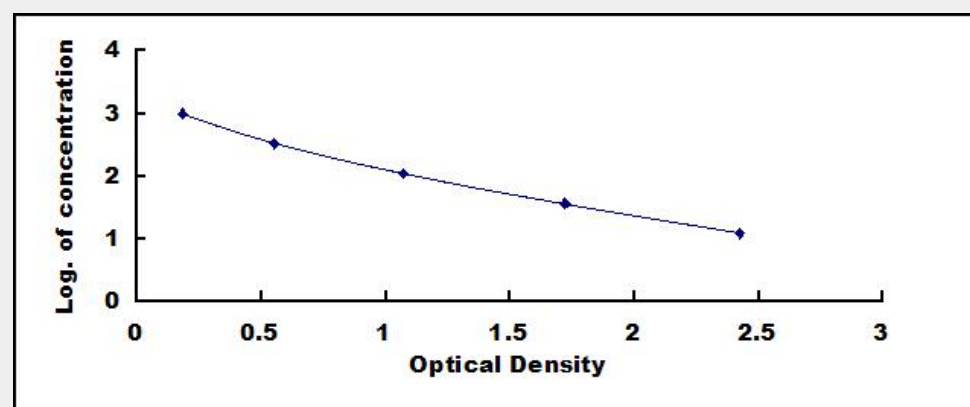
**SwissProt:**

P97297

## Test Principle

This assay employs the competitive inhibition enzyme immunoassay technique. A monoclonal antibody specific to Adrenomedullin

(ADM) has been pre-coated onto a microplate. A competitive inhibition reaction is launched between biotin labeled Adrenomedullin (ADM) and unlabeled Adrenomedullin (ADM) (Standards or samples) with the pre-coated antibody specific to Adrenomedullin (ADM). After incubation the unbound conjugate is washed off. Next, avidin conjugated to Horseradish Peroxidase (HRP) is added to each microplate well and incubated. The amount of bound HRP conjugate is reverse proportional to the concentration of Adrenomedullin (ADM) in the sample. After addition of the substrate solution, the intensity of color developed is reverse proportional to the concentration of Adrenomedullin (ADM) in the sample.



All products are for RESEARCH USE ONLY. Not for diagnostic & therapeutic purposes!