

ELISA Kit for Alpha-Endorphin (aEP)

Catalog No: tcue871



Available Sizes

Size: 96T



Specifications

Species Reactivity:

Homo sapiens (Human)

Sample Type:

Serum, plasma, tissue homogenates, cell culture supernates and other biological fluid.

Sensitivity:

The minimum detectable dose of this kit is typically less than 4.45pg/mL

Detection Range:

12.35-1000pg/mL

Assay Time:

2h

Detection Method:

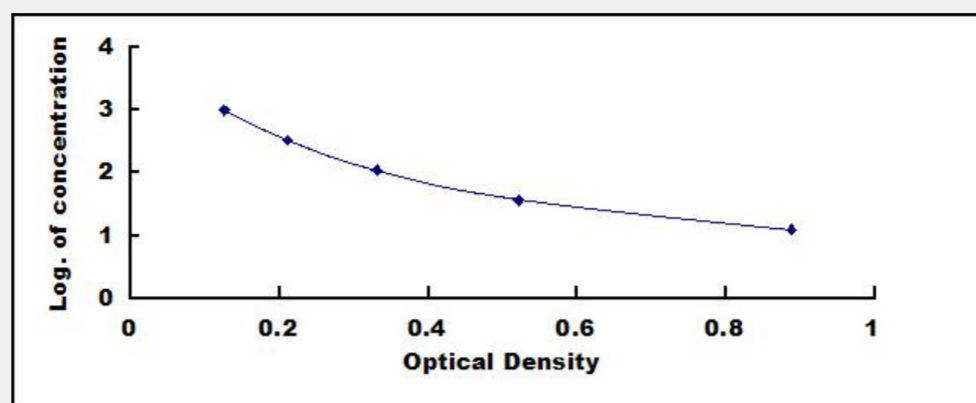
Enzyme-linked immunosorbent assay for Antigen Detection.

Tested Application:

ELISA

Test Principle

This assay employs the competitive inhibition enzyme immunoassay technique. A monoclonal antibody specific to Alpha-Endorphin (aEP) has been pre-coated onto a microplate. A competitive inhibition reaction is launched between biotin labeled Alpha-Endorphin (aEP) and unlabeled Alpha-Endorphin (aEP) (Standards or samples) with the pre-coated antibody specific to Alpha-Endorphin (aEP). After incubation the unbound conjugate is washed off. Next, avidin conjugated to Horseradish Peroxidase (HRP) is added to each microplate well and incubated. The amount of bound HRP conjugate is reverse proportional to the concentration of Alpha-Endorphin (aEP) in the sample. After addition of the substrate solution, the intensity of color developed is reverse proportional to the concentration of Alpha-Endorphin (aEP) in the sample.



All products are for RESEARCH USE ONLY. Not for diagnostic & therapeutic purposes!