

ELISA Kit for Receptor II For The Fc Region Of Immunoglobulin G (FcγRII)

Catalog No: tcue848



Available Sizes

Size: 96T



Specifications

Research Area:

CD & Adhesion molecule; Infection immunity;

Species Reactivity:

Homo sapiens (Human)

Sample Type:

serum, plasma and other biological fluids

Sensitivity:

The minimum detectable dose of this kit is typically less than 17.35pg/mL

Detection Range:

46.88-3,000pg/mL

Assay Time:

3h

Detection Method:

Enzyme-linked immunosorbent assay for Antigen Detection.

Tested Application:

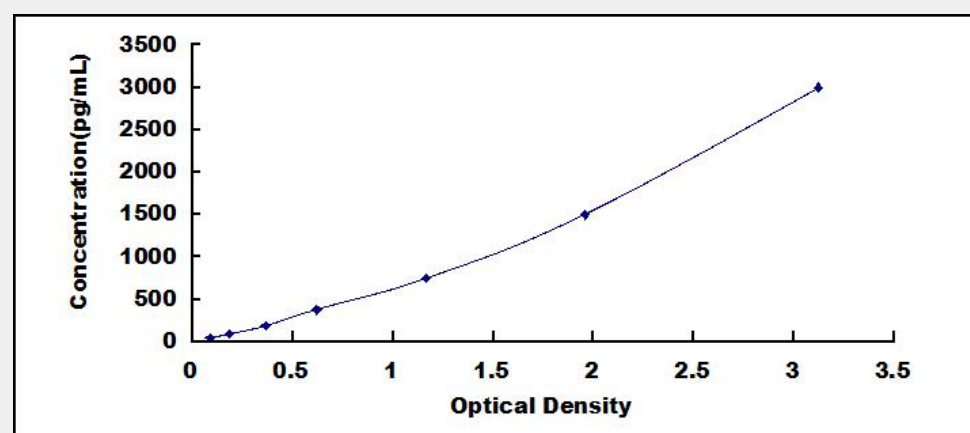
ELISA

SwissProt:

P12318

Test Principle

The test principle applied in this kit is Sandwich enzyme immunoassay. The microtiter plate provided in this kit has been pre-coated with an antibody specific to Receptor II For The Fc Region Of Immunoglobulin G (FcγRII). Standards or samples are then added to the appropriate microtiter plate wells with a biotin-conjugated antibody specific to Receptor II For The Fc Region Of Immunoglobulin G (FcγRII). Next, Avidin conjugated to Horseradish Peroxidase (HRP) is added to each microplate well and incubated. After TMB substrate solution is added, only those wells that contain Receptor II For The Fc Region Of Immunoglobulin G (FcγRII), biotin-conjugated antibody and enzyme-conjugated Avidin will exhibit a change in color. The enzyme-substrate reaction is terminated by the addition of sulphuric acid solution and the color change is measured spectrophotometrically at a wavelength of 450nm ± 10nm. The concentration of Receptor II For The Fc Region Of Immunoglobulin G (FcγRII) in the samples is then determined by comparing the O.D. of the samples to the standard curve.



All products are for RESEARCH USE ONLY. Not for diagnostic & therapeutic purposes!