

ELISA Kit for Gibberellic Acid (GA)

Catalog No: tcue824



Available Sizes

Size: 96T



Specifications

Research Area:

Nutrition metabolism;Hormone metabolism;

Species Reactivity:

Pan-species (General)

Sample Type:

tissue or cell culture supernates

Sensitivity:

The minimum detectable dose of this kit is typically less than 52.1ng/mL

Detection Range:

123.5-10,000ng/mL

Assay Time:

2h

Detection Method:

Enzyme-linked immunosorbent assay for Antigen Detection.

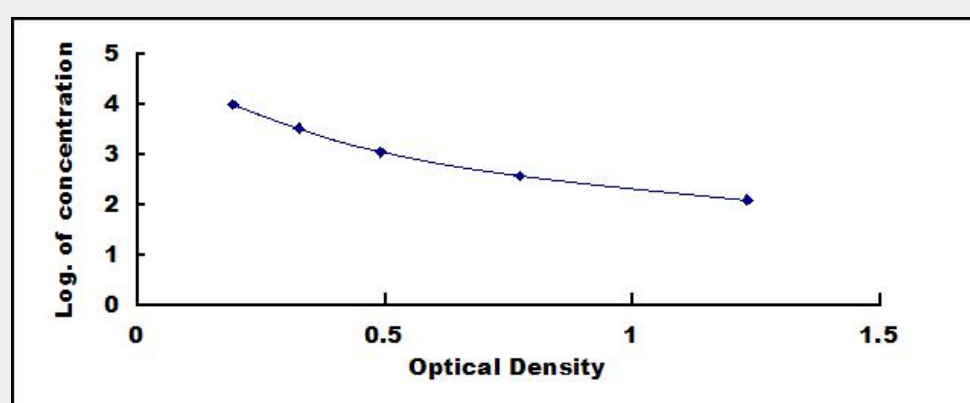
Tested Application:

ELISA

Test Principle

This assay employs the competitive inhibition enzyme immunoassay technique. A monoclonal antibody specific to Gibberellic Acid (GA) has been pre-coated onto a microplate. A competitive inhibition reaction is launched between biotin labeled Gibberellic Acid (GA) and unlabeled Gibberellic Acid (GA) (Standards or samples) with the pre-coated antibody specific to Gibberellic Acid (GA). After incubation the unbound conjugate is washed off. Next, avidin conjugated to Horseradish Peroxidase (HRP) is added to each microplate well and incubated. The amount of bound HRP conjugate is reverse proportional to the concentration of Gibberellic Acid

(GA) in the sample. After addition of the substrate solution, the intensity of color developed is reverse proportional to the concentration of Gibberellic Acid (GA) in the sample.



All products are for RESEARCH USE ONLY. Not for diagnostic & therapeutic purposes!