

ELISA Kit for Amylase Alpha 1, Salivary (AMY1)

Catalog No: tcue755



Available Sizes

Size: 96T



Specifications

Research Area:

Enzyme & Kinase; Infection immunity; Hepatology;

Species Reactivity:

Homo sapiens (Human)

Sample Type:

Serum, plasma, saliva and other biological fluids

Sensitivity:

The minimum detectable dose of this kit is typically less than 1.22ng/mL

Detection Range:

3.12-200ng/mL

Assay Time:

3h

Detection Method:

Enzyme-linked immunosorbent assay for Antigen Detection.

Tested Application:

ELISA

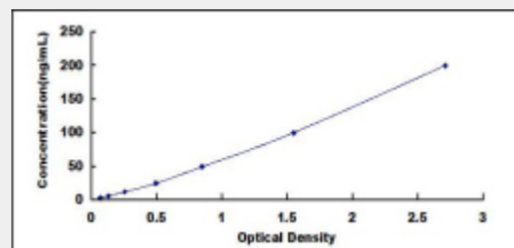
SwissProt:

P04745

Test Principle

The test principle applied in this kit is Sandwich enzyme immunoassay. The microtiter plate provided in this kit has been pre-coated

with an antibody specific to Amylase Alpha 1, Salivary (AMY1). Standards or samples are then added to the appropriate microtiter plate wells with a biotin-conjugated antibody specific to Amylase Alpha 1, Salivary (AMY1). Next, Avidin conjugated to Horseradish Peroxidase (HRP) is added to each microplate well and incubated. After TMB substrate solution is added, only those wells that contain Amylase Alpha 1, Salivary (AMY1), biotin-conjugated antibody and enzyme-conjugated Avidin will exhibit a change in color. The enzyme-substrate reaction is terminated by the addition of sulphuric acid solution and the color change is measured spectrophotometrically at a wavelength of $450\text{nm} \pm 10\text{nm}$. The concentration of Amylase Alpha 1, Salivary (AMY1) in the samples is then determined by comparing the O.D. of the samples to the standard curve.



All products are for RESEARCH USE ONLY. Not for diagnostic & therapeutic purposes!