

ELISA Kit for Hemoglobin (HB)

Catalog No: tcue722



Available Sizes

Size: 96T



Specifications

Research Area:

Metabolic pathway; Infection immunity; Hematology; Neuro science;

Species Reactivity:

Homo sapiens (Human)

Sample Type:

serum, plasma, tissue homogenates, erythrocyte lysates, cell culture supernates and other biological fluids

Sensitivity:

The minimum detectable dose of this kit is typically less than 2.62ug/mL

Detection Range:

6.17-500ug/mL

Assay Time:

2h

Detection Method:

Enzyme-linked immunosorbent assay for Antigen Detection.

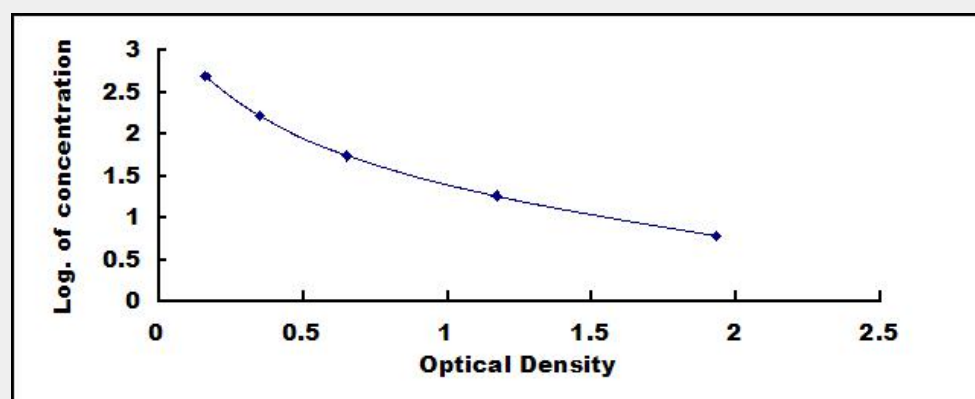
Tested Application:

ELISA

Test Principle

This assay employs the competitive inhibition enzyme immunoassay technique. A monoclonal antibody specific to Hemoglobin (HB) has been pre-coated onto a microplate. A competitive inhibition reaction is launched between biotin labeled Hemoglobin (HB) and unlabeled Hemoglobin (HB) (Standards or samples) with the pre-coated antibody specific to Hemoglobin (HB). After incubation the unbound conjugate is washed off. Next, avidin conjugated to Horseradish Peroxidase (HRP) is added to each microplate well and incubated. The amount of bound HRP conjugate is reverse proportional to the concentration of Hemoglobin (HB) in the sample. After

addition of the substrate solution, the intensity of color developed is reverse proportional to the concentration of Hemoglobin (HB) in the sample.



All products are for RESEARCH USE ONLY. Not for diagnostic & therapeutic purposes!