

# ELISA Kit for Ghrelin (GHRL)

Catalog No: tcue686



## Available Sizes

**Size:** 96T



## Specifications

### Research Area:

Signal transduction;Metabolic pathway;Endocrinology;Gastroenterology;Hormone metabolism;

### Species Reactivity:

Rattus norvegicus (Rat)

### Sample Type:

serum, plasma, tissue homogenates, cell lysates, cell culture supernates and other biological fluids

### Sensitivity:

The minimum detectable dose of this kit is typically less than 52.3pg/mL

### Detection Range:

123.5-10,000pg/mL

### Assay Time:

2h

### Detection Method:

Enzyme-linked immunosorbent assay for Antigen Detection.

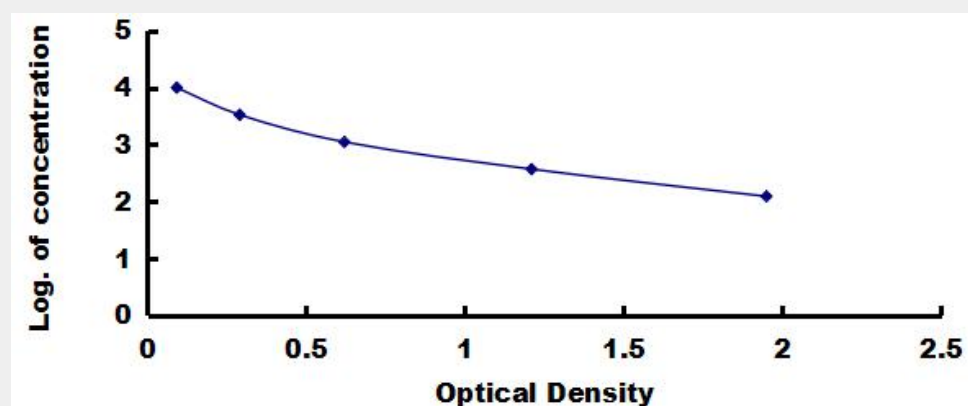
### Tested Application:

ELISA

## Test Principle

This assay employs the competitive inhibition enzyme immunoassay technique. A monoclonal antibody specific to Ghrelin (GHRL) has been pre-coated onto a microplate. A competitive inhibition reaction is launched between biotin labeled Ghrelin (GHRL) and unlabeled Ghrelin (GHRL) (Standards or samples) with the pre-coated antibody specific to Ghrelin (GHRL). After incubation the unbound conjugate is washed off. Next, avidin conjugated to Horseradish Peroxidase (HRP) is added to each microplate well and incubated. The amount of bound HRP conjugate is reverse proportional to the concentration of Ghrelin (GHRL) in the sample. After

addition of the substrate solution, the intensity of color developed is reverse proportional to the concentration of Ghrelin (GHRL) in the sample.



All products are for RESEARCH USE ONLY. Not for diagnostic & therapeutic purposes!