

ELISA Kit for Thymic Factor (TF)

Catalog No: tcue676



Available Sizes

Size: 96T



Specifications

Research Area:

Infection immunity;Endocrinology;Neuro science;Hormone metabolism;

Species Reactivity:

Homo sapiens (Human)

Sample Type:

serum, plasma and other biological fluids

Sensitivity:

The minimum detectable dose of this kit is typically less than 16.1pg/mL

Detection Range:

37.0-3,000pg/mL

Assay Time:

2h

Detection Method:

Enzyme-linked immunosorbent assay for Antigen Detection.

Tested Application:

ELISA

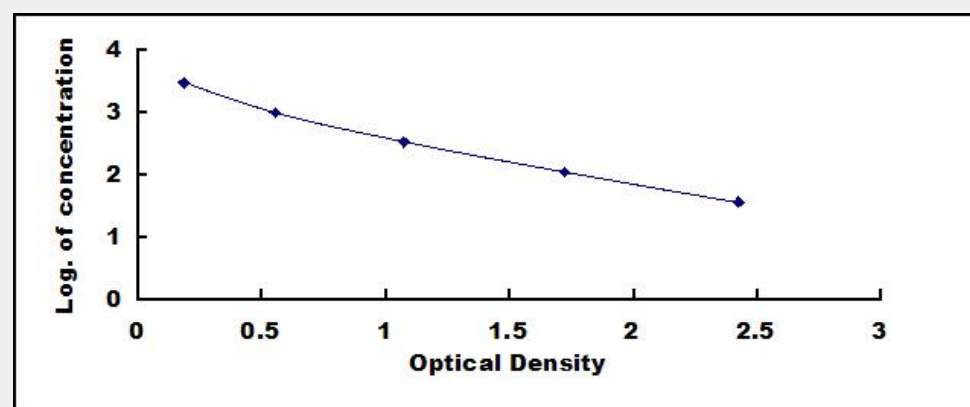
SwissProt:

hymuli

Test Principle

This assay employs the competitive inhibition enzyme immunoassay technique. A monoclonal antibody specific to Thymic Factor (TF)

has been pre-coated onto a microplate. A competitive inhibition reaction is launched between biotin labeled Thymic Factor (TF) and unlabeled Thymic Factor (TF) (Standards or samples) with the pre-coated antibody specific to Thymic Factor (TF). After incubation the unbound conjugate is washed off. Next, avidin conjugated to Horseradish Peroxidase (HRP) is added to each microplate well and incubated. The amount of bound HRP conjugate is reverse proportional to the concentration of Thymic Factor (TF) in the sample. After addition of the substrate solution, the intensity of color developed is reverse proportional to the concentration of Thymic Factor (TF) in the sample.



All products are for RESEARCH USE ONLY. Not for diagnostic & therapeutic purposes!