

ELISA Kit for Breast Cancer Susceptibility Protein 1 (BRCA1)

Catalog No: tcue638



Available Sizes

Size: 96T



Specifications

Research Area:

Signal transduction;Tumor immunity;

Species Reactivity:

Homo sapiens (Human)

Sample Type:

Tissue homogenates, cell lysates and other biological fluids

Sensitivity:

The minimum detectable dose of this kit is typically less than 0.065ng/mL

Detection Range:

0.156-10ng/mL

Assay Time:

3h

Detection Method:

Enzyme-linked immunosorbent assay for Antigen Detection.

Tested Application:

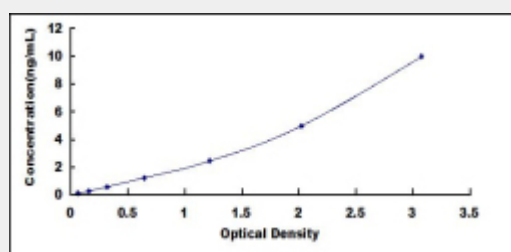
ELISA

SwissProt:

P38398

Test Principle

The test principle applied in this kit is Sandwich enzyme immunoassay. The microtiter plate provided in this kit has been pre-coated with an antibody specific to Breast Cancer Susceptibility Protein 1 (BRCA1). Standards or samples are then added to the appropriate microtiter plate wells with a biotin-conjugated antibody specific to Breast Cancer Susceptibility Protein 1 (BRCA1). Next, Avidin conjugated to Horseradish Peroxidase (HRP) is added to each microplate well and incubated. After TMB substrate solution is added, only those wells that contain Breast Cancer Susceptibility Protein 1 (BRCA1), biotin-conjugated antibody and enzyme-conjugated Avidin will exhibit a change in color. The enzyme-substrate reaction is terminated by the addition of sulphuric acid solution and the color change is measured spectrophotometrically at a wavelength of $450\text{nm} \pm 10\text{nm}$. The concentration of Breast Cancer Susceptibility Protein 1 (BRCA1) in the samples is then determined by comparing the O.D. of the samples to the standard curve.



All products are for RESEARCH USE ONLY. Not for diagnostic & therapeutic purposes!