

ELISA Kit for Cross Linked C-Telopeptide Of Type II Collagen (CTXII)

Catalog No: tcue613



Available Sizes

Size: 96T



Specifications

Research Area:

Metabolic pathway;Bone metabolism;Rheumatology;

Species Reactivity:

Homo sapiens (Human)

Sample Type:

serum, plasma, tissue homogenates, cell lysates, cell culture supernates and other biological fluids

Sensitivity:

The minimum detectable dose of this kit is typically less than 52.3pg/mL

Detection Range:

123.5-10,000pg/mL

Assay Time:

2h

Detection Method:

Enzyme-linked immunosorbent assay for Antigen Detection.

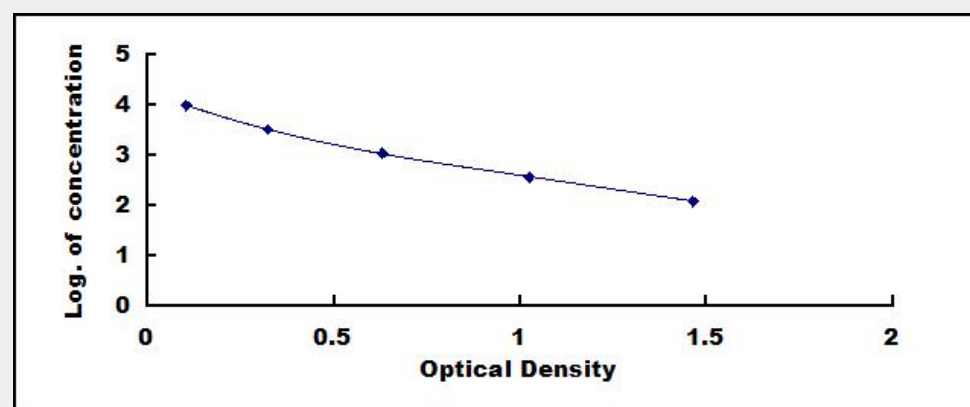
Tested Application:

ELISA

Test Principle

This assay employs the competitive inhibition enzyme immunoassay technique. A monoclonal antibody specific to Cross Linked C-Telopeptide Of Type II Collagen (CTXII) has been pre-coated onto a microplate. A competitive inhibition reaction is launched between

biotin labeled Cross Linked C-Telopeptide Of Type II Collagen (CTXII) and unlabeled Cross Linked C-Telopeptide Of Type II Collagen (CTXII) (Standards or samples) with the pre-coated antibody specific to Cross Linked C-Telopeptide Of Type II Collagen (CTXII). After incubation the unbound conjugate is washed off. Next, avidin conjugated to Horseradish Peroxidase (HRP) is added to each microplate well and incubated. The amount of bound HRP conjugate is reverse proportional to the concentration of Cross Linked C-Telopeptide Of Type II Collagen (CTXII) in the sample. After addition of the substrate solution, the intensity of color developed is reverse proportional to the concentration of Cross Linked C-Telopeptide Of Type II Collagen (CTXII) in the sample.



All products are for RESEARCH USE ONLY. Not for diagnostic & therapeutic purposes!