

ELISA Kit for Secretory Immunoglobulin A (sIgA)

Catalog No: tcue573



Available Sizes

Size: 96T



Specifications

Research Area:

Infection immunity;Immune molecule;Reproductive science;Genetic science;Dermatology;Immunodeficiency;

Species Reactivity:

Homo sapiens (Human)

Sample Type:

serum, plasma, saliva, stool, tissue homogenates, cell lysates, cell culture supernates and other biological fluids

Sensitivity:

The minimum detectable dose of this kit is typically less than 9.9pg/mL

Detection Range:

27.4-20,000pg/mL

Assay Time:

3h

Detection Method:

Enzyme-linked immunosorbent assay for Antigen Detection.

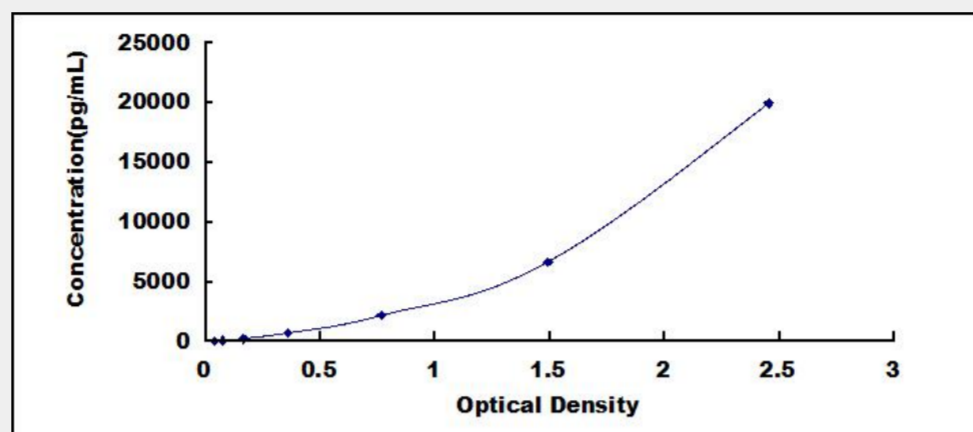
Tested Application:

ELISA

Test Principle

The test principle applied in this kit is Sandwich enzyme immunoassay. The microtiter plate provided in this kit has been pre-coated with an antibody specific to Secretory Immunoglobulin A (sIgA). Standards or samples are then added to the appropriate microtiter plate wells with a biotin-conjugated antibody specific to Secretory Immunoglobulin A (sIgA). Next, Avidin conjugated to Horseradish Peroxidase (HRP) is added to each microplate well and incubated. After TMB substrate solution is added, only those wells that contain Secretory Immunoglobulin A (sIgA), biotin-conjugated antibody and enzyme-conjugated Avidin will exhibit a change in color.

The enzyme-substrate reaction is terminated by the addition of sulphuric acid solution and the color change is measured spectrophotometrically at a wavelength of $450\text{nm} \pm 10\text{nm}$. The concentration of Secretory Immunoglobulin A (sIgA) in the samples is then determined by comparing the O.D. of the samples to the standard curve.



All products are for RESEARCH USE ONLY. Not for diagnostic & therapeutic purposes!