

# ELISA Kit for Gastrin (GT)

Catalog No: tcue540



## Available Sizes

---

**Size:** 96T



## Specifications

---

**Research Area:**

Metabolic pathway;Endocrinology;Gastroenterology;Hormone metabolism;

---

**Species Reactivity:**

Homo sapiens (Human)

---

**Sample Type:**

Serum, plasma, tissue homogenates, cell lysates, cell culture supernates and other biological fluids

---

**Sensitivity:**

The minimum detectable dose of this kit is typically less than 4.39pg/mL

---

**Detection Range:**

12.35-1,000pg/mL

---

**Assay Time:**

2h

---

**Detection Method:**

Enzyme-linked immunosorbent assay for Antigen Detection.

---

**Tested Application:**

ELISA

---

**SwissProt:**

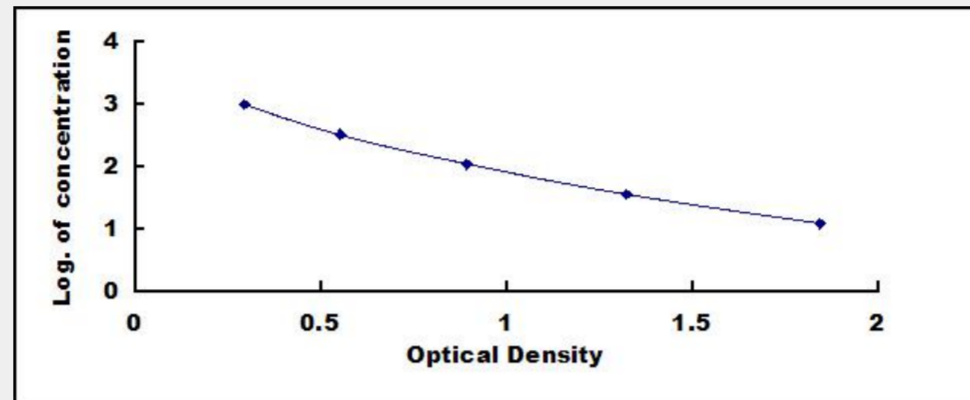
P01350

---

## Test Principle

This assay employs the competitive inhibition enzyme immunoassay technique. A monoclonal antibody specific to Gastrin (GT) has

been pre-coated onto a microplate. A competitive inhibition reaction is launched between biotin labeled Gastrin (GT) and unlabeled Gastrin (GT) (Standards or samples) with the pre-coated antibody specific to Gastrin (GT). After incubation the unbound conjugate is washed off. Next, avidin conjugated to Horseradish Peroxidase (HRP) is added to each microplate well and incubated. The amount of bound HRP conjugate is reverse proportional to the concentration of Gastrin (GT) in the sample. After addition of the substrate solution, the intensity of color developed is reverse proportional to the concentration of Gastrin (GT) in the sample.



All products are for RESEARCH USE ONLY. Not for diagnostic & therapeutic purposes!