

# ELISA Kit for Immunoglobulin G (IgG)

Catalog No: tcue485



## Available Sizes

Size: 96T



## Specifications

### Research Area:

Infection immunity; Immune molecule; Hematology;

### Species Reactivity:

Cavia (Guinea pig )

### Sample Type:

Serum, plasma, tissue homogenates, cell lysates, cell culture supernates and other biological fluids.

### Sensitivity:

The minimum detectable dose of this kit is typically less than 0.48ug/mL

### Detection Range:

1.23-100ug/mL

### Assay Time:

2h

### Detection Method:

Enzyme-linked immunosorbent assay for Antigen Detection.

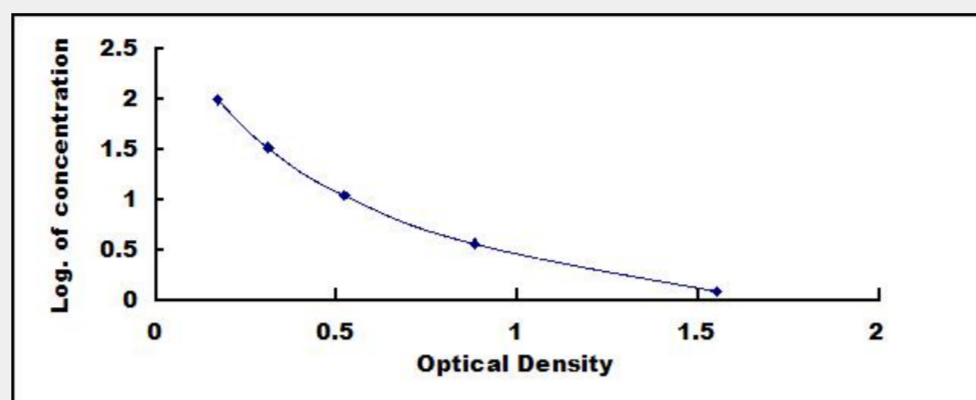
### Tested Application:

ELISA

## Test Principle

The microtiter plate provided in this kit has been pre-coated with an antigen. Standards or samples are then added to the appropriate microtiter plate wells with a Horseradish Peroxidase (HRP)-conjugated secondary antibody. After TMB substrate solution is added, those wells that contain Immunoglobulin G (IgG) will exhibit a change in color. The enzyme-substrate reaction is terminated by the addition of sulphuric acid solution and the color change is measured spectrophotometrically at a wavelength of 450nm  $\pm$  10nm. The concentration of Immunoglobulin G (IgG) in the samples is then determined by comparing the O.D. of the samples to the

standard curve.



All products are for RESEARCH USE ONLY. Not for diagnostic & therapeutic purposes!