

ELISA Kit for Secretin (SCT)

Catalog No: tcue464



Available Sizes

Size: 96T



Specifications

Research Area:

Endocrinology;Hepatology;Hormone metabolism;

Species Reactivity:

Homo sapiens (Human)

Sample Type:

serum, plasma, tissue homogenates, cell lysates, cell culture supernates and other biological fluids

Sensitivity:

The minimum detectable dose of this kit is typically less than 7.17pg/mL

Detection Range:

18.52-1,500pg/mL

Assay Time:

2h

Detection Method:

Enzyme-linked immunosorbent assay for Antigen Detection.

Tested Application:

ELISA

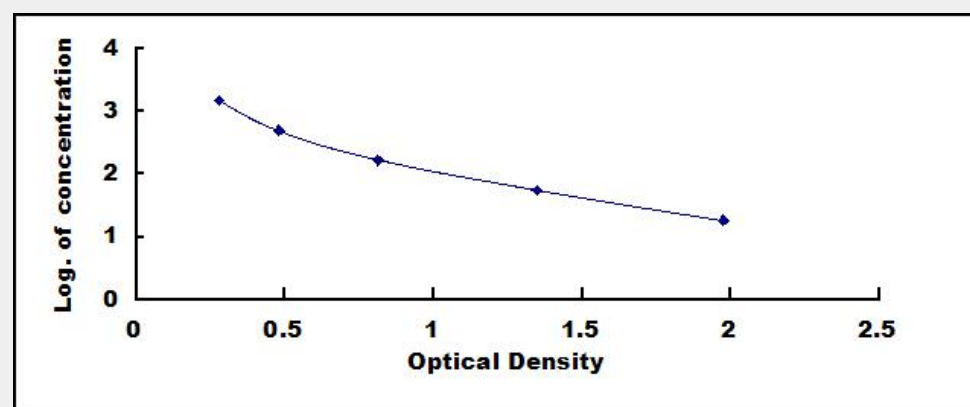
SwissProt:

P09683

Test Principle

This assay employs the competitive inhibition enzyme immunoassay technique. A monoclonal antibody specific to Secretin (SCT) has

been pre-coated onto a microplate. A competitive inhibition reaction is launched between biotin labeled Secretin (SCT) and unlabeled Secretin (SCT) (Standards or samples) with the pre-coated antibody specific to Secretin (SCT). After incubation the unbound conjugate is washed off. Next, avidin conjugated to Horseradish Peroxidase (HRP) is added to each microplate well and incubated. The amount of bound HRP conjugate is reverse proportional to the concentration of Secretin (SCT) in the sample. After addition of the substrate solution, the intensity of color developed is reverse proportional to the concentration of Secretin (SCT) in the sample.



All products are for RESEARCH USE ONLY. Not for diagnostic & therapeutic purposes!