

ELISA Kit for Beta-Hydroxybutyric Acid (bHB)

Catalog No: tcue444



Available Sizes

Size: 96T



Specifications

Research Area:

Signal transduction;Metabolic pathway;Endocrinology;

Species Reactivity:

Pan-species (General)

Sample Type:

serum, plasma, tissue homogenates, cell lysates, cell culture supernates and other biological fluids

Sensitivity:

The minimum detectable dose of this kit is typically less than 0.48ug/mL

Detection Range:

1.23-100ug/mL

Assay Time:

2h

Detection Method:

Enzyme-linked immunosorbent assay for Antigen Detection.

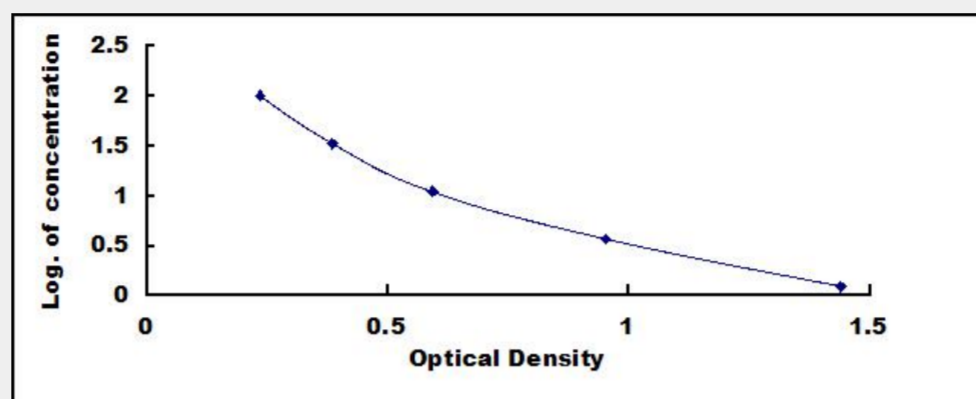
Tested Application:

ELISA

Test Principle

This assay employs the competitive inhibition enzyme immunoassay technique. A monoclonal antibody specific to Beta-Hydroxybutyric Acid (bHB) has been pre-coated onto a microplate. A competitive inhibition reaction is launched between biotin labeled Beta-Hydroxybutyric Acid (bHB) and unlabeled Beta-Hydroxybutyric Acid (bHB) (Standards or samples) with the pre-coated antibody specific to Beta-Hydroxybutyric Acid (bHB). After incubation the unbound conjugate is washed off. Next, avidin conjugated to Horseradish Peroxidase (HRP) is added to each microplate well and incubated. The amount of bound HRP conjugate is reverse

proportional to the concentration of Beta-Hydroxybutyric Acid (bHB) in the sample. After addition of the substrate solution, the intensity of color developed is reverse proportional to the concentration of Beta-Hydroxybutyric Acid (bHB) in the sample.



All products are for RESEARCH USE ONLY. Not for diagnostic & therapeutic purposes!