

ELISA Kit for Estrone (E1)

Catalog No: tcue432



Available Sizes

Size: 96T



Specifications

Research Area:

Metabolic pathway;Endocrinology;Reproductive science;Genetic science;Hormone metabolism;

Species Reactivity:

Pan-species (General)

Sample Type:

Serum, plasma and other biological fluids

Sensitivity:

The minimum detectable dose of this kit is typically less than 8.86pg/mL

Detection Range:

24.69-2,000pg/mL

Assay Time:

2h

Detection Method:

Enzyme-linked immunosorbent assay for Antigen Detection.

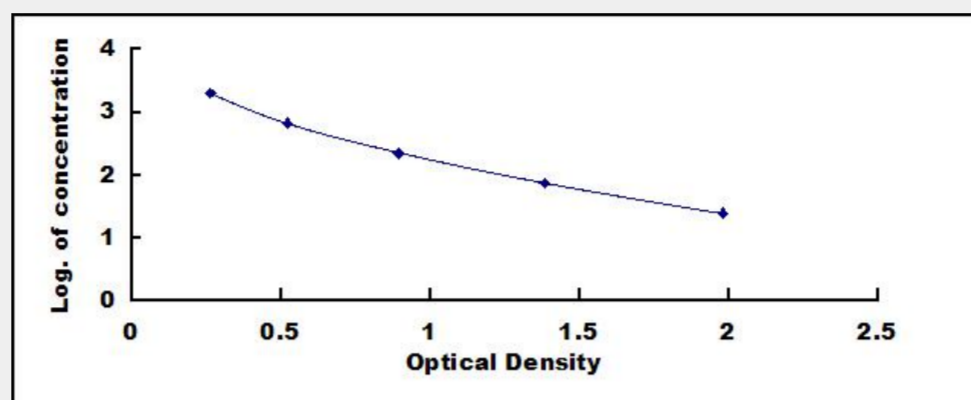
Tested Application:

ELISA

Test Principle

This assay employs the competitive inhibition enzyme immunoassay technique. A monoclonal antibody specific to Estrone (E1) has been pre-coated onto a microplate. A competitive inhibition reaction is launched between biotin labeled Estrone (E1) and unlabeled Estrone (E1) (Standards or samples) with the pre-coated antibody specific to Estrone (E1). After incubation the unbound conjugate is washed off. Next, avidin conjugated to Horseradish Peroxidase (HRP) is added to each microplate well and incubated. The amount of bound HRP conjugate is reverse proportional to the concentration of Estrone (E1) in the sample. After addition of the substrate

solution, the intensity of color developed is reverse proportional to the concentration of Estrone (E1) in the sample.



All products are for RESEARCH USE ONLY. Not for diagnostic & therapeutic purposes!