

# ELISA Kit for Complement Factor H (CFH)

Catalog No: tcue424



## Available Sizes

**Size:** 96T



## Specifications

**Research Area:**

Metabolic pathway;Infection immunity;Immune molecule;

**Species Reactivity:**

Rattus norvegicus (Rat)

**Sample Type:**

Serum, plasma and other biological fluids.

**Sensitivity:**

The minimum detectable dose of this kit is typically less than 5.77ng/mL

**Detection Range:**

12.35-1,000ng/mL

**Assay Time:**

2h

**Detection Method:**

Enzyme-linked immunosorbent assay for Antigen Detection.

**Tested Application:**

ELISA

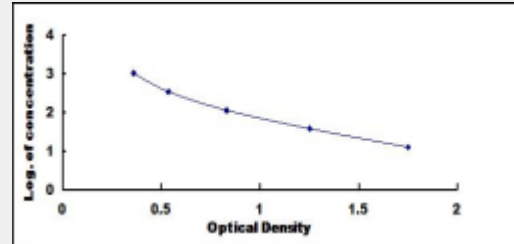
**SwissProt:**

G3V9R2

## Test Principle

The microtiter plate provided in this kit has been pre-coated with an antigen. Standards or samples are then added to the

appropriate microtiter plate wells with a Horseradish Peroxidase (HRP)-conjugated secondary antibody. After TMB substrate solution is added, those wells that contain Complement Factor H (CFH) will exhibit a change in color. The enzyme-substrate reaction is terminated by the addition of sulphuric acid solution and the color change is measured spectrophotometrically at a wavelength of  $450\text{nm} \pm 10\text{nm}$ . The concentration of Complement Factor H (CFH) in the samples is then determined by comparing the O.D. of the samples to the standard curve.



All products are for RESEARCH USE ONLY. Not for diagnostic & therapeutic purposes!