

# ELISA Kit for Glutathione S Transferase Alpha 1 (GSTa1)

Catalog No: tcue416



## Available Sizes

Size: 96T



## Specifications

### Research Area:

Enzyme & Kinase; Tumor immunity; Hepatology;

### Species Reactivity:

Homo sapiens (Human)

### Sample Type:

serum, plasma, tissue homogenates, cell lysates, cell culture supernates and other biological fluids

### Sensitivity:

The minimum detectable dose of this kit is typically less than 27.4pg/mL

### Detection Range:

62.5-4,000pg/mL

### Assay Time:

3h

### Detection Method:

Enzyme-linked immunosorbent assay for Antigen Detection.

### Tested Application:

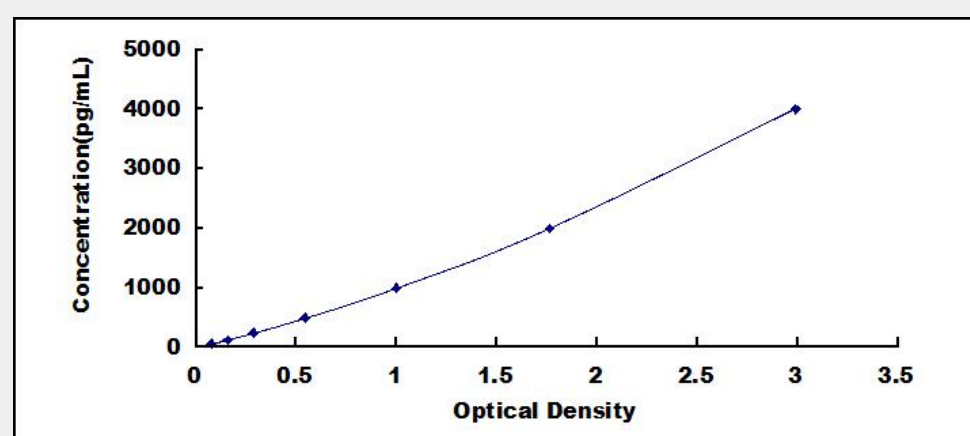
ELISA

### SwissProt:

P08263

## Test Principle

The test principle applied in this kit is Sandwich enzyme immunoassay. The microtiter plate provided in this kit has been pre-coated with an antibody specific to Glutathione S Transferase Alpha 1 (GSTa1). Standards or samples are then added to the appropriate microtiter plate wells with a biotin-conjugated antibody specific to Glutathione S Transferase Alpha 1 (GSTa1). Next, Avidin conjugated to Horseradish Peroxidase (HRP) is added to each microplate well and incubated. After TMB substrate solution is added, only those wells that contain Glutathione S Transferase Alpha 1 (GSTa1), biotin-conjugated antibody and enzyme-conjugated Avidin will exhibit a change in color. The enzyme-substrate reaction is terminated by the addition of sulphuric acid solution and the color change is measured spectrophotometrically at a wavelength of  $450\text{nm} \pm 10\text{nm}$ . The concentration of Glutathione S Transferase Alpha 1 (GSTa1) in the samples is then determined by comparing the O.D. of the samples to the standard curve.



All products are for RESEARCH USE ONLY. Not for diagnostic & therapeutic purposes!