

ELISA Kit for Neuropeptide S (NPS)

Catalog No: tcue338



Available Sizes

Size: 96T



Specifications

Research Area:

Neuro science;Hormone metabolism;

Species Reactivity:

Homo sapiens (Human)

Sample Type:

Serum, plasma and other biological fluids

Sensitivity:

The minimum detectable dose of this kit is typically less than 4.48pg/mL

Detection Range:

12.35-1,000pg/mL

Assay Time:

2h

Detection Method:

Enzyme-linked immunosorbent assay for Antigen Detection.

Tested Application:

ELISA

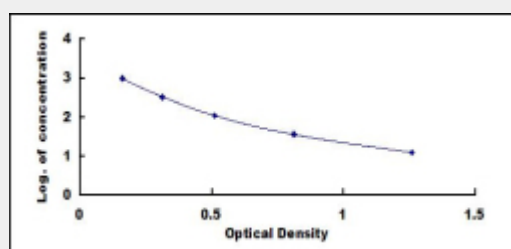
SwissProt:

POCOP6

Test Principle

This assay employs the competitive inhibition enzyme immunoassay technique. A monoclonal antibody specific to Neuropeptide S

(NPS) has been pre-coated onto a microplate. A competitive inhibition reaction is launched between biotin labeled Neuropeptide S (NPS) and unlabeled Neuropeptide S (NPS) (Standards or samples) with the pre-coated antibody specific to Neuropeptide S (NPS). After incubation the unbound conjugate is washed off. Next, avidin conjugated to Horseradish Peroxidase (HRP) is added to each microplate well and incubated. The amount of bound HRP conjugate is reverse proportional to the concentration of Neuropeptide S (NPS) in the sample. After addition of the substrate solution, the intensity of color developed is reverse proportional to the concentration of Neuropeptide S (NPS) in the sample.



All products are for RESEARCH USE ONLY. Not for diagnostic & therapeutic purposes!