

ELISA Kit for Annexin A5 (ANXA5)

Catalog No: tcue330



Available Sizes

Size: 96T



Specifications

Research Area:

Apoptosis; Hematology;

Species Reactivity:

Mus musculus (Mouse)

Sample Type:

Serum, plasma and other biological fluids

Sensitivity:

The minimum detectable dose of this kit is typically less than 6.4pg/mL

Detection Range:

15.6-1,000pg/mL

Assay Time:

3h

Detection Method:

Enzyme-linked immunosorbent assay for Antigen Detection.

Tested Application:

ELISA

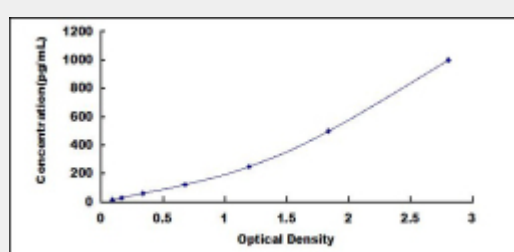
SwissProt:

P48036

Test Principle

The test principle applied in this kit is Sandwich enzyme immunoassay. The microtiter plate provided in this kit has been pre-coated

with an antibody specific to Annexin A5 (ANXA5). Standards or samples are then added to the appropriate microtiter plate wells with a biotin-conjugated antibody specific to Annexin A5 (ANXA5). Next, Avidin conjugated to Horseradish Peroxidase (HRP) is added to each microplate well and incubated. After TMB substrate solution is added, only those wells that contain Annexin A5 (ANXA5), biotin-conjugated antibody and enzyme-conjugated Avidin will exhibit a change in color. The enzyme-substrate reaction is terminated by the addition of sulphuric acid solution and the color change is measured spectrophotometrically at a wavelength of $450\text{nm} \pm 10\text{nm}$. The concentration of Annexin A5 (ANXA5) in the samples is then determined by comparing the O.D. of the samples to the standard curve.



All products are for RESEARCH USE ONLY. Not for diagnostic & therapeutic purposes!