

# ELISA Kit for Clara Cell Protein 16 (CC16)

Catalog No: tcue323



## Available Sizes

**Size:** 96T



## Specifications

**Research Area:**

Infection immunity;Cardiovascular biology;Pulmonology;

**Species Reactivity:**

Mus musculus (Mouse)

**Sample Type:**

serum, plasma, lung lavage fluid, tissue homogenates, cell lysates, cell culture supernates and other biological fluids

**Sensitivity:**

The minimum detectable dose of this kit is typically less than 30pg/mL

**Detection Range:**

78-5000pg/mL

**Assay Time:**

3h

**Detection Method:**

Enzyme-linked immunosorbent assay for Antigen Detection.

**Tested Application:**

ELISA

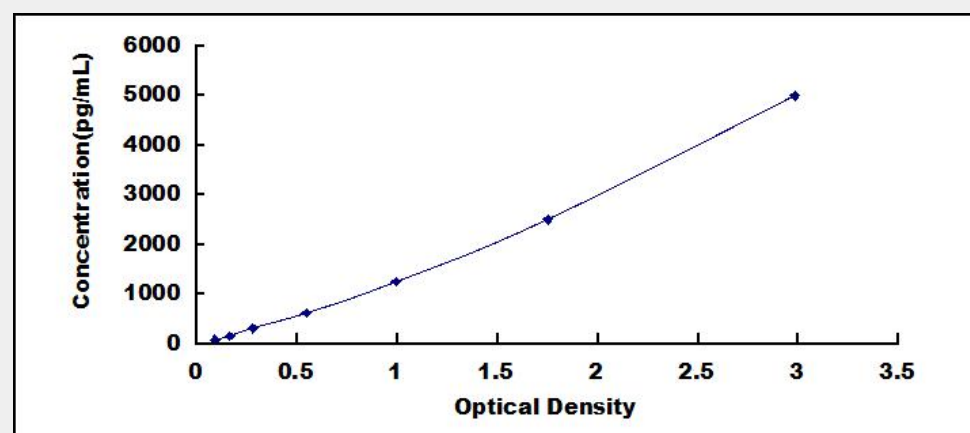
**SwissProt:**

Q06318

## Test Principle

The test principle applied in this kit is Sandwich enzyme immunoassay. The microtiter plate provided in this kit has been pre-coated

with an antibody specific to Clara Cell Protein 16 (CC16). Standards or samples are then added to the appropriate microtiter plate wells with a biotin-conjugated antibody specific to Clara Cell Protein 16 (CC16). Next, Avidin conjugated to Horseradish Peroxidase (HRP) is added to each microplate well and incubated. After TMB substrate solution is added, only those wells that contain Clara Cell Protein 16 (CC16), biotin-conjugated antibody and enzyme-conjugated Avidin will exhibit a change in color. The enzyme-substrate reaction is terminated by the addition of sulphuric acid solution and the color change is measured spectrophotometrically at a wavelength of  $450\text{nm} \pm 10\text{nm}$ . The concentration of Clara Cell Protein 16 (CC16) in the samples is then determined by comparing the O.D. of the samples to the standard curve.



All products are for RESEARCH USE ONLY. Not for diagnostic & therapeutic purposes!