

ELISA Kit for Apelin 12 (AP12)

Catalog No: tcue312



Available Sizes

Size: 96T



Specifications

Research Area:

Metabolic pathway;Endocrinology;Cardiovascular biology;Gastroenterology;Hormone metabolism;

Species Reactivity:

Homo sapiens (Human)

Sample Type:

Serum, plasma, tissue homogenates, cell lysates, cell culture supernates and other biological fluids

Sensitivity:

The minimum detectable dose of this kit is typically less than 26.52pg/mL

Detection Range:

74.07-6,000pg/mL

Assay Time:

2h

Detection Method:

Enzyme-linked immunosorbent assay for Antigen Detection.

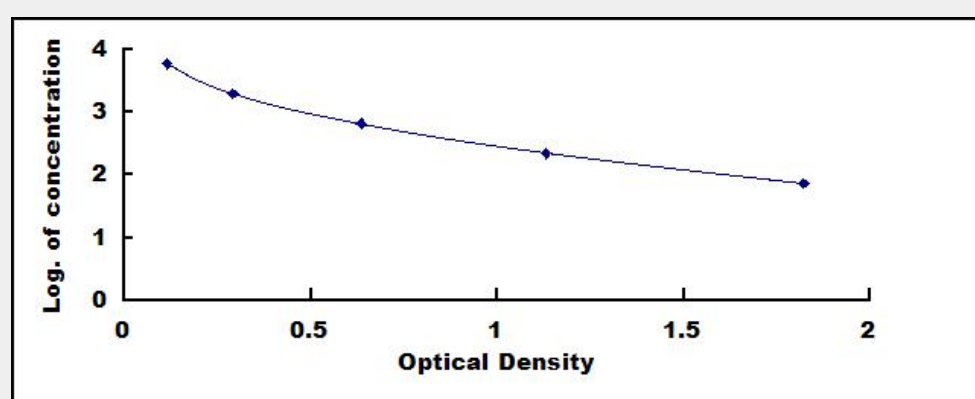
Tested Application:

ELISA

Test Principle

This assay employs the competitive inhibition enzyme immunoassay technique. A monoclonal antibody specific to Apelin 12 (AP12) has been pre-coated onto a microplate. A competitive inhibition reaction is launched between biotin labeled Apelin 12 (AP12) and unlabeled Apelin 12 (AP12) (Standards or samples) with the pre-coated antibody specific to Apelin 12 (AP12). After incubation the unbound conjugate is washed off. Next, avidin conjugated to Horseradish Peroxidase (HRP) is added to each microplate well and incubated. The amount of bound HRP conjugate is reverse proportional to the concentration of Apelin 12 (AP12) in the sample. After

addition of the substrate solution, the intensity of color developed is reverse proportional to the concentration of Apelin 12 (AP12) in the sample.



All products are for RESEARCH USE ONLY. Not for diagnostic & therapeutic purposes!