

ELISA Kit for Von Willebrand Factor (vWF)

Catalog No: tcue264



Available Sizes

Size: 96T



Specifications

Research Area:

Signal transduction; Hematology;

Species Reactivity:

Oryctolagus cuniculus (Rabbit)

Sample Type:

plasma

Sensitivity:

The minimum detectable dose of this kit is typically less than 4.64ng/mL

Detection Range:

12.35-1,000ng/mL

Assay Time:

2h

Detection Method:

Enzyme-linked immunosorbent assay for Antigen Detection.

Tested Application:

ELISA

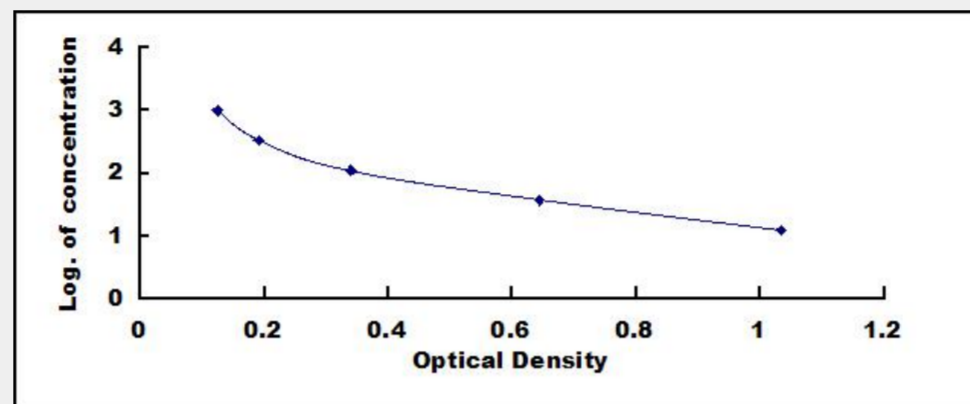
SwissProt:

Q28834

Test Principle

This assay employs the competitive inhibition enzyme immunoassay technique. A monoclonal antibody specific to Von Willebrand

Factor (vWF) has been pre-coated onto a microplate. A competitive inhibition reaction is launched between biotin labeled Von Willebrand Factor (vWF) and unlabeled Von Willebrand Factor (vWF) (Standards or samples) with the pre-coated antibody specific to Von Willebrand Factor (vWF). After incubation the unbound conjugate is washed off. Next, avidin conjugated to Horseradish Peroxidase (HRP) is added to each microplate well and incubated. The amount of bound HRP conjugate is reverse proportional to the concentration of Von Willebrand Factor (vWF) in the sample. After addition of the substrate solution, the intensity of color developed is reverse proportional to the concentration of Von Willebrand Factor (vWF) in the sample.



All products are for RESEARCH USE ONLY. Not for diagnostic & therapeutic purposes!