

ELISA Kit for Plasmin / Antiplasmin Complex (PAP)

Catalog No: tcue217



Available Sizes

Size: 96T



Specifications

Research Area:

Signal transduction;Enzyme & Kinase;Hematology;

Species Reactivity:

Homo sapiens (Human)

Sample Type:

plasma

Sensitivity:

The minimum detectable dose of this kit is typically less than 3.5pg/mL

Detection Range:

7.8-500pg/mL

Assay Time:

3h

Detection Method:

Enzyme-linked immunosorbent assay for Antigen Detection.

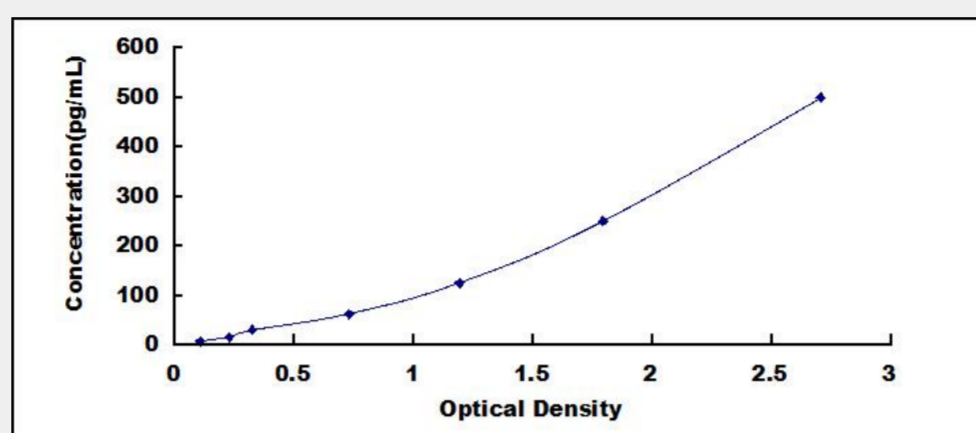
Tested Application:

ELISA

Test Principle

The microtiter plate provided in this kit has been pre-coated with an antibody specific to alpha2-antiplasmin. Standards or samples are then added to the appropriate microtiter plate wells with a biotin-conjugated antibody specific to plasmin. Next, Avidin conjugated to Horseradish Peroxidase (HRP) is added to each microplate well and incubated. After TMB substrate solution is added, only those wells that contain PAP, biotin-conjugated antibody and enzyme-conjugated Avidin will exhibit a change in color. The enzyme-substrate reaction is terminated by the addition of sulphuric acid solution and the color change is measured

spectrophotometrically at a wavelength of $450\text{nm} \pm 10\text{nm}$. The concentration of PAP in the samples is then determined by comparing the O.D. of the samples to the standard curve.



All products are for RESEARCH USE ONLY. Not for diagnostic & therapeutic purposes!