

ELISA Kit for Anti-Albumin Antibody (Anti-ALB)

Catalog No: tcue190



Available Sizes

Size: 96T



Specifications

Research Area:

Tumor immunity; Infection immunity; Hematology; Hepatology; Nutrition metabolism;

Species Reactivity:

Homo sapiens (Human)

Sample Type:

Serum, plasma and other biological fluids.

Sensitivity:

The minimum detectable dose of this kit is typically less than 1.27ng/mL

Detection Range:

3.12-200ng/mL

Assay Time:

2h, 30min

Detection Method:

Enzyme-linked immunosorbent assay for Antibody Detection.

Tested Application:

ELISA

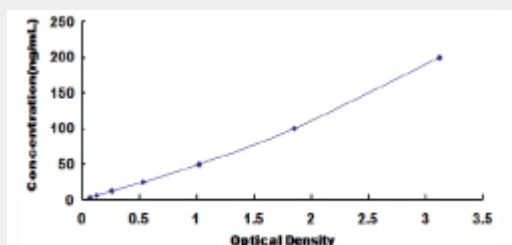
SwissProt:

P02768

Test Principle

The microtiter plate provided in this kit has been pre-coated with an antigen. Standards or samples are then added to the

appropriate microtiter plate wells with a Horseradish Peroxidase (HRP)-conjugated secondary antibody. After TMB substrate solution is added, those wells that contain Anti-Albumin Antibody (Anti-ALB) will exhibit a change in color. The enzyme-substrate reaction is terminated by the addition of sulphuric acid solution and the color change is measured spectrophotometrically at a wavelength of $450\text{nm} \pm 10\text{nm}$. The concentration of Anti-Albumin Antibody (Anti-ALB) in the samples is then determined by comparing the O.D. of the samples to the standard curve.



All products are for RESEARCH USE ONLY. Not for diagnostic & therapeutic purposes!