

# ELISA Kit for Vasoactive Intestinal Peptide (VIP)

Catalog No: tcue101



## Available Sizes

---

**Size:** 96T



## Specifications

---

**Research Area:**

Endocrinology;Gastroenterology;Hormone metabolism;

**Species Reactivity:**

Homo sapiens (Human)

**Sample Type:**

Serum, plasma, tissue homogenates, cell lysates, cell culture supernates and other biological fluids

**Sensitivity:**

The minimum detectable dose of this kit is typically less than 2.63pg/mL

**Detection Range:**

6.17-500pg/mL

**Assay Time:**

2h

**Detection Method:**

Enzyme-linked immunosorbent assay for Antigen Detection.

**Tested Application:**

ELISA

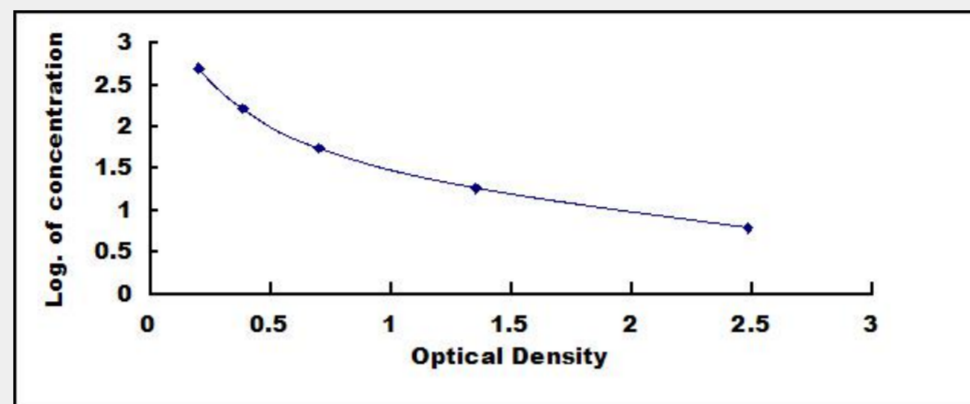
**SwissProt:**

P01282

## Test Principle

This assay employs the competitive inhibition enzyme immunoassay technique. A monoclonal antibody specific to Vasoactive

Intestinal Peptide (VIP) has been pre-coated onto a microplate. A competitive inhibition reaction is launched between biotin labeled Vasoactive Intestinal Peptide (VIP) and unlabeled Vasoactive Intestinal Peptide (VIP) (Standards or samples) with the pre-coated antibody specific to Vasoactive Intestinal Peptide (VIP). After incubation the unbound conjugate is washed off. Next, avidin conjugated to Horseradish Peroxidase (HRP) is added to each microplate well and incubated. The amount of bound HRP conjugate is reverse proportional to the concentration of Vasoactive Intestinal Peptide (VIP) in the sample. After addition of the substrate solution, the intensity of color developed is reverse proportional to the concentration of Vasoactive Intestinal Peptide (VIP) in the sample.



All products are for RESEARCH USE ONLY. Not for diagnostic & therapeutic purposes!