

ELISA Kit for Calcitonin Gene Related Peptide (CGRP)

Catalog No: tcue74



Available Sizes

Size: 96T



Specifications

Research Area:

Infection immunity;Endocrinology;Neuro science;Hormone metabolism;Bone metabolism;Dermatology;

Species Reactivity:

Rattus norvegicus (Rat)

Sample Type:

serum, plasma, tissue homogenates, cell lysates, cell culture supernates and other biological fluids

Sensitivity:

The minimum detectable dose of this kit is typically less than 4.94pg/mL

Detection Range:

12.35-1000pg/mL

Assay Time:

2h

Detection Method:

Enzyme-linked immunosorbent assay for Antigen Detection.

Tested Application:

ELISA

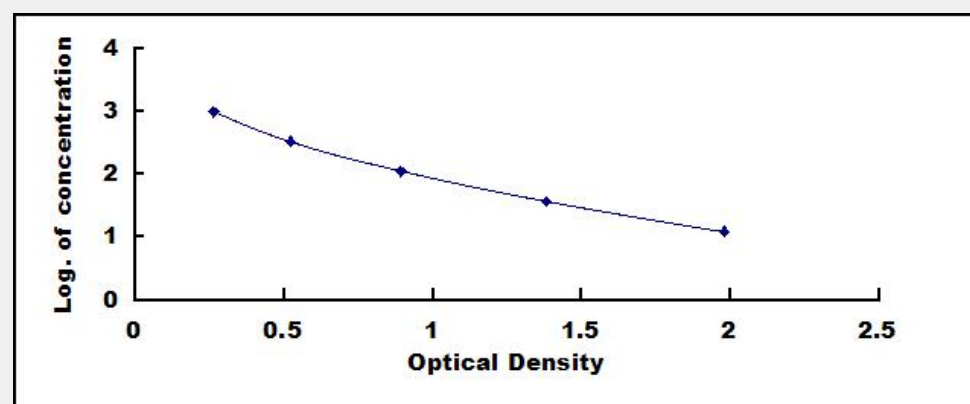
SwissProt:

P10093

Test Principle

This assay employs the competitive inhibition enzyme immunoassay technique. A monoclonal antibody specific to Calcitonin Gene

Related Peptide (CGRP) has been pre-coated onto a microplate. A competitive inhibition reaction is launched between biotin labeled Calcitonin Gene Related Peptide (CGRP) and unlabeled Calcitonin Gene Related Peptide (CGRP) (Standards or samples) with the pre-coated antibody specific to Calcitonin Gene Related Peptide (CGRP). After incubation the unbound conjugate is washed off. Next, avidin conjugated to Horseradish Peroxidase (HRP) is added to each microplate well and incubated. The amount of bound HRP conjugate is reverse proportional to the concentration of Calcitonin Gene Related Peptide (CGRP) in the sample. After addition of the substrate solution, the intensity of color developed is reverse proportional to the concentration of Calcitonin Gene Related Peptide (CGRP) in the sample.



All products are for RESEARCH USE ONLY. Not for diagnostic & therapeutic purposes!