

# ELISA Kit for Somatostatin (SST)

Catalog No: tcue70



## Available Sizes

**Size:** 96T



## Specifications

**Research Area:**

Tumor immunity;Endocrinology;Hormone metabolism;

**Species Reactivity:**

Mus musculus (Mouse)

**Sample Type:**

serum, plasma and other biological fluids

**Sensitivity:**

The minimum detectable dose of this kit is typically less than 2.77pg/mL

**Detection Range:**

6.17-500pg/mL

**Assay Time:**

2h

**Detection Method:**

Enzyme-linked immunosorbent assay for Antigen Detection.

**Tested Application:**

ELISA

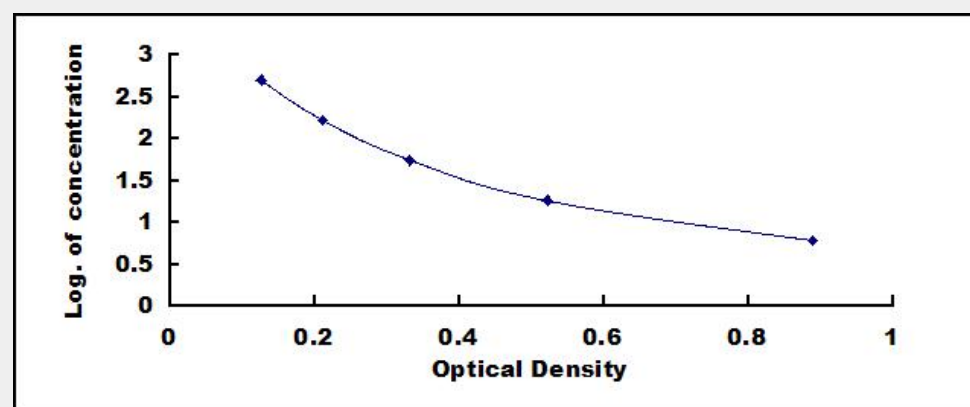
**SwissProt:**

P60041

## Test Principle

This assay employs the competitive inhibition enzyme immunoassay technique. A monoclonal antibody specific to Somatostatin

(SST) has been pre-coated onto a microplate. A competitive inhibition reaction is launched between biotin labeled Somatostatin (SST) and unlabeled Somatostatin (SST) (Standards or samples) with the pre-coated antibody specific to Somatostatin (SST). After incubation the unbound conjugate is washed off. Next, avidin conjugated to Horseradish Peroxidase (HRP) is added to each microplate well and incubated. The amount of bound HRP conjugate is reverse proportional to the concentration of Somatostatin (SST) in the sample. After addition of the substrate solution, the intensity of color developed is reverse proportional to the concentration of Somatostatin (SST) in the sample.



All products are for RESEARCH USE ONLY. Not for diagnostic & therapeutic purposes!