

# ELISA Kit for Intercellular Adhesion Molecule 1 (ICAM1)

## Catalog No: tcue64



### Available Sizes

**Size:** 96T



### Specifications

**Research Area:**

CD & Adhesion molecule; Tumor immunity; Infection immunity;

**Species Reactivity:**

Homo sapiens (Human)

**Sample Type:**

serum, plasma, tissue homogenates, cell lysates, cell culture supernates and other biological fluids

**Sensitivity:**

The minimum detectable dose of this kit is typically less than 30pg/mL

**Detection Range:**

78-5,000pg/mL

**Assay Time:**

3h

**Detection Method:**

Enzyme-linked immunosorbent assay for Antigen Detection.

**Tested Application:**

ELISA

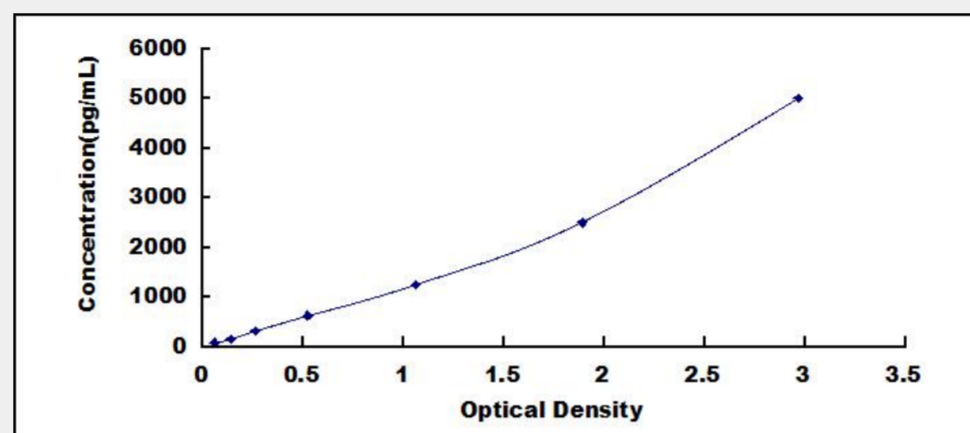
**SwissProt:**

P05362

### Test Principle

The test principle applied in this kit is Sandwich enzyme immunoassay. The microtiter plate provided in this kit has been pre-coated

with an antibody specific to Intercellular Adhesion Molecule 1 (ICAM1). Standards or samples are then added to the appropriate microtiter plate wells with a biotin-conjugated antibody specific to Intercellular Adhesion Molecule 1 (ICAM1). Next, Avidin conjugated to Horseradish Peroxidase (HRP) is added to each microplate well and incubated. After TMB substrate solution is added, only those wells that contain Intercellular Adhesion Molecule 1 (ICAM1), biotin-conjugated antibody and enzyme-conjugated Avidin will exhibit a change in color. The enzyme-substrate reaction is terminated by the addition of sulphuric acid solution and the color change is measured spectrophotometrically at a wavelength of  $450\text{nm} \pm 10\text{nm}$ . The concentration of Intercellular Adhesion Molecule 1 (ICAM1) in the samples is then determined by comparing the O.D. of the samples to the standard curve.



All products are for RESEARCH USE ONLY. Not for diagnostic & therapeutic purposes!