

# Abarelix

**Catalog No: tcsc5873**



## Available Sizes

**Size:** 5mg

**Size:** 10mg

**Size:** 25mg

**Size:** 50mg



## Specifications

**CAS No:**

183552-38-7

**Formula:**

$C_{72}H_{95}ClN_{14}O_{14}$

**Pathway:**

GPCR/G Protein

**Target:**

GNRH Receptor

**Purity / Grade:**

>98%

**Solubility:**

DMSO :  $\geq 14.2$  mg/mL (10.03 mM)

**Alternative Names:**

R3827;PPI 149

**Observed Molecular Weight:**

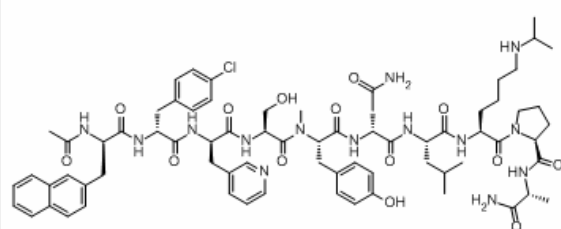
1416.06

## Product Description

Abarelix is a potent **gonadotrophin-releasing hormone (GnRH)** antagonist, used for prostate cancer treatment.

***In Vitro:*** Abarelix (30 and 300 µg/mL) and cetrorelix cause significantly increased histamine release<sup>[1]</sup>. Abarelix is the first

GnRH antagonist to be developed, and can produce rapid and sustained decreases in testosterone to castrate levels without the need for co-administration of an antiandrogen, and with a very low complication rate in the short term<sup>[2]</sup>. Abarelix demonstrates to promptly and substantially reduce follicle-stimulating hormone levels to lower than LHRH agonist. Abarelix does not cause a surge in serum testosterone that can precipitate a flare phenomenon or worsening of disease, particularly dangerous for patients with metastatic, symptomatic disease, and produces medical castration more quickly<sup>[3]</sup>.



All products are for RESEARCH USE ONLY. Not for diagnostic & therapeutic purposes!