

# JWH-133

**Catalog No: tcsc5513**



## Available Sizes

**Size:** 5mg

**Size:** 10mg

**Size:** 25mg

**Size:** 50mg



## Specifications

**CAS No:**

259869-55-1

**Formula:**

$C_{22}H_{32}O$

**Pathway:**

Autophagy;GPCR/G Protein

**Target:**

Autophagy;Cannabinoid Receptor

**Purity / Grade:**

>98%

**Solubility:**

10 mM in DMSO

**Observed Molecular Weight:**

312.49

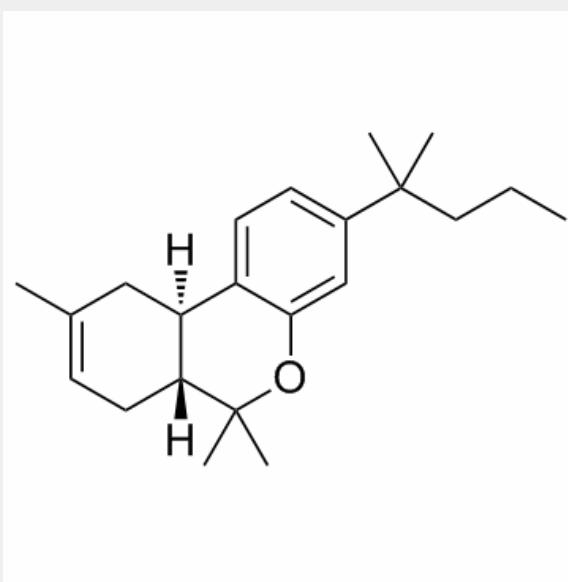
## Product Description

JWH 133 is a potent CB2 selective agonist with  $K_i$  of 3.4 nM, 200-fold selective over CB1 receptors.

target: CB2

In vitro: JWH-133 inhibits IL-12p40 production and enhances IL-10 release by activated macrophages through a CB2 receptor-mediated pathway. [1] , a widely used experimental in vitro model to study mechanisms of toxicity and protection in nigral dopaminergic neurons. JWH-133 (10-40  $\mu$ M) induced a concentration-dependent decrease of SH-SY5Y cell viability and proliferation rate. [2]

In vivo: The reference for animal injection is 1.5 mg/kg i.v.[3]



All products are for RESEARCH USE ONLY. Not for diagnostic & therapeutic purposes!