

Leuprorelin

Catalog No: tcsc4947



Available Sizes

Size: 1mg

Size: 5mg

Size: 10mg



Specifications

CAS No:
53714-56-0

Formula:
 $C_{59}H_{84}N_{16}O_{12}$

Pathway:
GPCR/G Protein

Target:
GNRH Receptor

Purity / Grade:
>98%

Solubility:
10 mM in DMSO

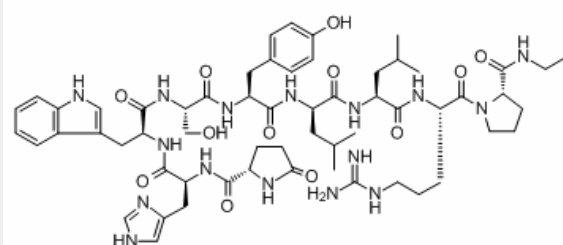
Alternative Names:
Leuprolide

Observed Molecular Weight:
1209.4

Product Description

Target: GnRH receptor

Leuporelin is a gonadotrophin-releasing hormone (GnRH) analogue used to treat a wide range of sex hormone-related disorders including advanced prostatic cancer, endometriosis and precocious puberty. Leuporelin acts primarily on the anterior pituitary, inducing a transient early rise in gonadotrophin release. With continued use, Leuporelin causes pituitary desensitisation and/or down-regulation, leading to suppressed circulating levels of gonadotrophins and sex hormones. [1] By interrupting the normal pulsatile stimulation of, and thus desensitizing, the GnRH receptors, it indirectly downregulates the secretion of gonadotropins luteinizing hormone (LH) and follicle-stimulating hormone (FSH), leading to hypogonadism and thus a dramatic reduction in estradiol and testosterone levels in both sexes. [2]



All products are for RESEARCH USE ONLY. Not for diagnostic & therapeutic purposes!