

# Chlorophyllin (sodium copper salt)

Catalog No: tcsc4380



## Available Sizes

---

**Size:** 100mg



## Specifications

---

**CAS No:**

11006-34-1

**Formula:**

$C_{34}H_{31}CuN_4Na_3O_6$

**Pathway:**

Others

**Target:**

Others

**Purity / Grade:**

>98%

**Solubility:**

H<sub>2</sub>O : ≥ 66.66 mg/mL (92.05 mM)

**Alternative Names:**

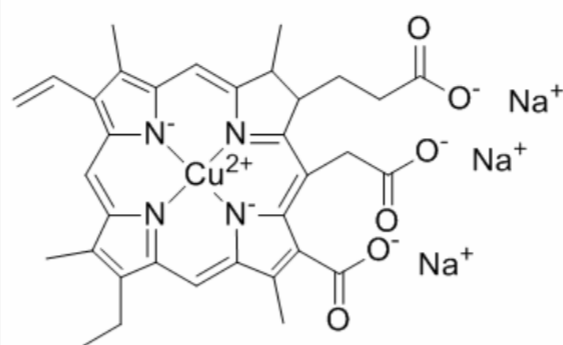
Chlorophyllin copper sodium complex; Sodium-copper chlorin e6; Chlorophyllin coppered trisodium salt

**Observed Molecular Weight:**

724.15

## Product Description

Chlorophyllin sodium copper salt is a semi-synthetic mixture of water-soluble sodium copper salts derived from chlorophyll, primarily used as a food additive and in alternative medicine.



All products are for RESEARCH USE ONLY. Not for diagnostic & therapeutic purposes!