

Methoxy-PEPy

Catalog No: tcsc3634



Available Sizes

Size: 5mg

Size: 10mg

Size: 50mg

Size: 100mg



Specifications

CAS No:

524924-76-3

Formula:

$C_{13}H_{10}N_2O$

Pathway:

GPCR/G Protein

Target:

mGluR

Purity / Grade:

>98%

Solubility:

10 mM in DMSO

Observed Molecular Weight:

210.23

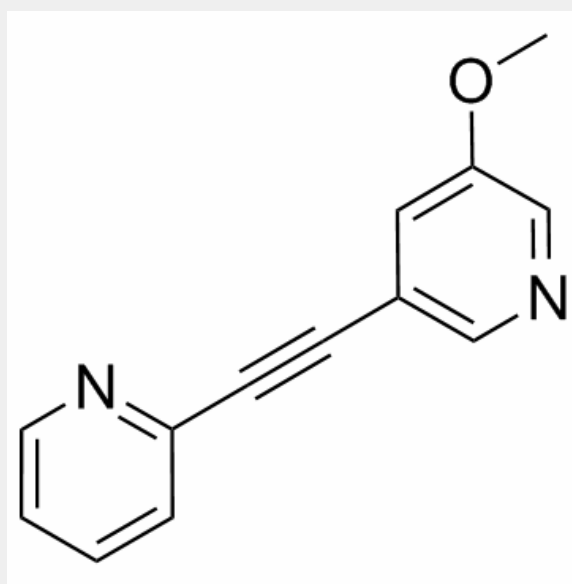
Product Description

Methoxy-PEPy is a potent and highly selective mGlu5 receptor antagonist with IC50 of 1 nM.

IC50 value: 1 nM [1]

Target: mGlu5R inhibitor

Administration of [3H]methoxy-PEPy (50 microCi/kg i.v.) to mGlu5 receptor-deficient mice revealed binding at background levels in forebrain, whereas wild-type mice exhibited 14-fold higher binding in forebrain relative to cerebellum [2]. The calcium transients stimulated by these agonists were potently inhibited by reference allosteric mGlu5 antagonists - 2-methyl-6-(phenylethynyl)pyridine (MPEP), 3-[(2-methyl-1,3-thiazol-4-yl)ethynyl]pyridine (MTEP) and 3-methoxy-5-(pyridine-2-ylethynyl)pyridine (methoxy-PEPy) (IC(50) ranges: 0.8-66 nM) [3].



All products are for RESEARCH USE ONLY. Not for diagnostic & therapeutic purposes!