

Remodelin

Catalog No: tcsc3458



Available Sizes

Size: 5mg

Size: 10mg

Size: 50mg

Size: 100mg

Size: 200mg



Specifications

CAS No:

949912-58-7

Formula:

$C_{15}H_{14}N_4S$

Pathway:

Epigenetics

Target:

Histone Acetyltransferase

Purity / Grade:

>98%

Solubility:

10 mM in DMSO

Observed Molecular Weight:

282.36

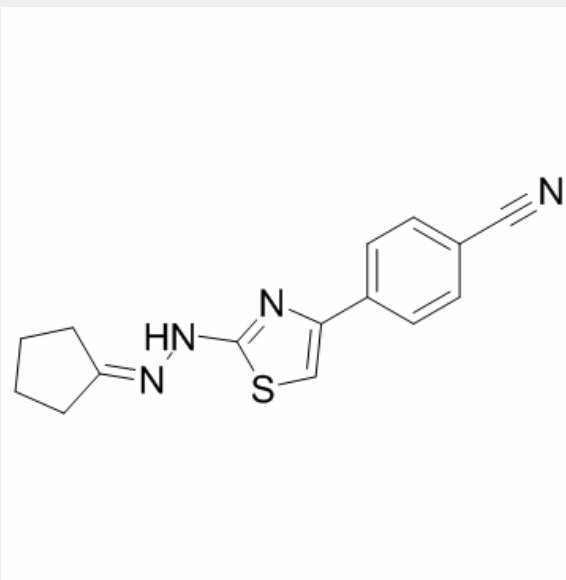
Product Description

Remodelin is a novel potent and selective inhibitor of the acetyl-transferase protein NAT10.

IC50 value:

Target: NAT10 inhibitor

Remodelin can improve nuclear architecture, chromatin organization, and fitness of both human lamin A/C-depleted cells and HGPS-derived patient cells, and decrease markers of DNA damage in these cells. Using a combination of chemical, cellular, and genetic approaches, acetyl-transferase protein NAT10 was identified as the target of Remodelin that mediated nuclear shape rescue in laminopathic cells via microtubule reorganization. Down-regulation and mutations of the nuclear-architecture proteins lamin A and C cause misshapen nuclei and altered chromatin organization associated with cancer and laminopathies, including the premature-aging disease Hutchinson-Gilford progeria syndrome (HGPS). Remodelin is a useful chemical tool to study how NAT10 affects nuclear architecture and suggest alternative strategies for treating laminopathies and aging.



All products are for RESEARCH USE ONLY. Not for diagnostic & therapeutic purposes!