

# ML216

**Catalog No: tcsc3352**



## Available Sizes

**Size:** 5mg

**Size:** 10mg

**Size:** 25mg

**Size:** 50mg



## Specifications

**CAS No:**

1430213-30-1

**Formula:**

$C_{15}H_9F_4N_5OS$

**Pathway:**

Cell Cycle/DNA Damage

**Target:**

DNA/RNA Synthesis

**Purity / Grade:**

>98%

**Solubility:**

DMSO : 1.71 mg/mL (4.46 mM; Need ultrasonic and warming)

**Alternative Names:**

CID-49852229

**Observed Molecular Weight:**

383.32

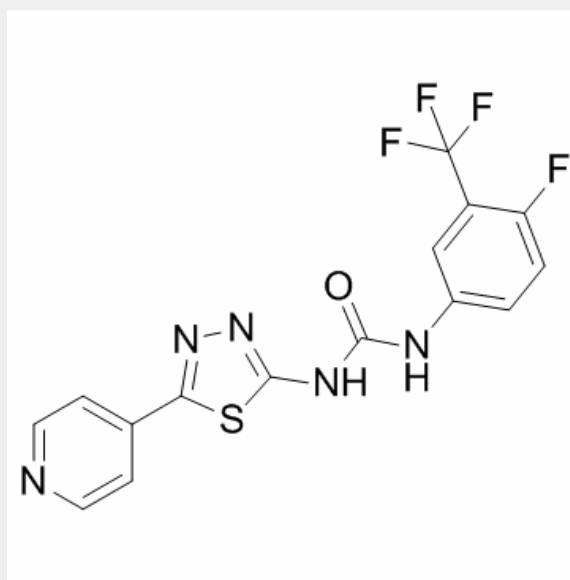
## Product Description

ML216(CID-49852229) is a potent inhibitor of the DNA unwinding activity of BLM helicase; showing similar IC<sub>50</sub>s of 3.0 and 0.97  $\mu$ M for full length BLM and BLM636–1298 respectively.

IC<sub>50</sub> value: 3.0/0.97  $\mu$ M(Full length/636–1298 BLM)

Target: BLM helicase inhibitor

ML216 shows cell-based activity, and can induce sister chromatid exchanges, enhance to the toxicity of aphidicolin and exert anti-proliferative activity in cells expressing BLM, but not in those lacking BLM.



All products are for RESEARCH USE ONLY. Not for diagnostic & therapeutic purposes!