

# JW 642

**Catalog No: tcsc3342**



## Available Sizes

**Size:** 5mg

**Size:** 10mg

**Size:** 50mg

**Size:** 100mg



## Specifications

**CAS No:**

1416133-89-5

**Formula:**

$C_{21}H_{20}F_6N_2O_3$

**Pathway:**

Metabolic Enzyme/Protease

**Target:**

MAGL

**Purity / Grade:**

>98%

**Solubility:**

10 mM in DMSO

**Observed Molecular Weight:**

462.39

## Product Description

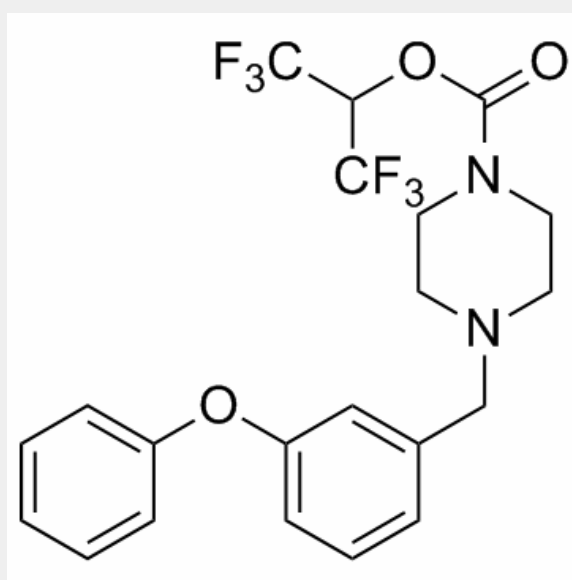
JW 642 is a potent inhibitor of monoacylglycerol lipase (MAGL) that displays IC50 values of 7.6, 14, and 3.7 nM for inhibition of MAGL

in mouse, rat, and human brain membranes, respectively.

IC50 value: 7.6/14/3.7 nM(mouse/rat/human MAGL) [1]

Target: MAGL inhibitor

JW 642 is selective for MAGL, requiring much higher concentrations to effectively inhibit fatty acid amide hydrolase activity (IC50s = 31, 14, and 20.6  $\mu$ M for mouse, rat, and human brain membranes, respectively).



All products are for RESEARCH USE ONLY. Not for diagnostic & therapeutic purposes!