

GNE-9605

Catalog No: tcsc3297



Available Sizes

Size: 5mg

Size: 10mg

Size: 50mg

Size: 100mg



Specifications

CAS No:

1536200-31-3

Formula:

$C_{17}H_{20}ClF_4N_7O$

Pathway:

Autophagy

Target:

LRRK2

Purity / Grade:

>98%

Solubility:

DMSO : \geq 60 mg/mL (133.38 mM)

Observed Molecular Weight:

449.83

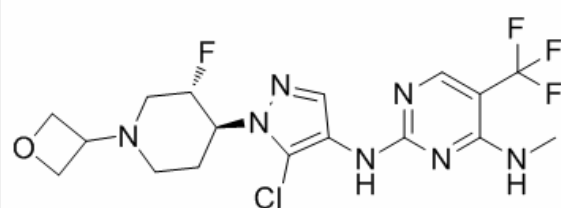
Product Description

GNE-9605 is a highly potent, selective, and brain-penetrant LRRK2 inhibitor with IC50 of 19 nM.

IC50 value:

Target: LRRK2

GNE-9605 retained excellent predicted human metabolic stability when assayed in human liver microsomes and hepatocytes. In addition, no reversible or time-dependent inhibition of any of the major CYP isoforms was observed. The demonstrated metabolic stability, brain penetration across multiple species, and selectivity of these inhibitors support their use in preclinical efficacy and safety studies.



All products are for RESEARCH USE ONLY. Not for diagnostic & therapeutic purposes!