

Bambuterol

Catalog No: tcsc3157



Available Sizes

Size: 10mg

Size: 50mg

Size: 100mg



Specifications

CAS No:

81732-65-2

Formula:

$C_{18}H_{29}N_3O_5$

Pathway:

GPCR/G Protein

Target:

Adrenergic Receptor

Purity / Grade:

>98%

Solubility:

10 mM in DMSO

Alternative Names:

KWD-2183; (±)-Bambuterol

Observed Molecular Weight:

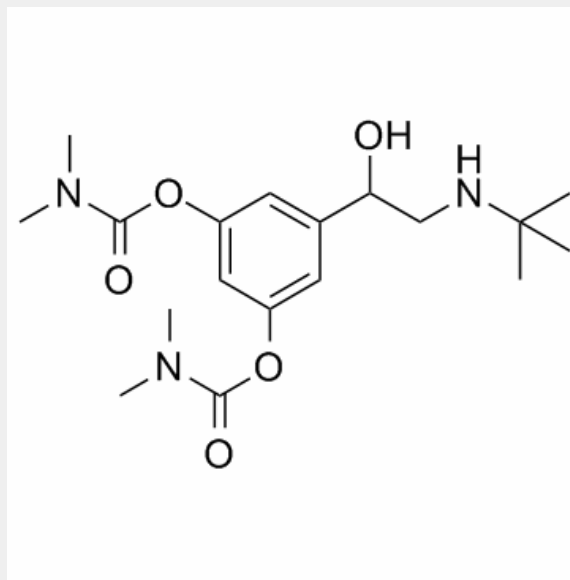
367.44

Product Description

Bambuterol (KWD-2183) is a long acting beta-adrenoceptor agonist (LABA) used in the treatment of asthma; it also is a prodrug of terbutaline.

IC50 & Target: beta-adrenoceptor

In Vitro: Bambuterol is contraindicated in pregnancy and in people with seriously impaired liver function. It can be used by people with renal impairment, but dose adjustments are necessary. The adverse effect profile of bambuterol is similar to that of salbutamol, and may include fatigue, nausea, palpitations, headache, dizziness and tremor.



All products are for RESEARCH USE ONLY. Not for diagnostic & therapeutic purposes!