

Epibrassinolide

Catalog No: tcsc3129



Available Sizes

Size: 5mg

Size: 10mg

Size: 50mg

Size: 100mg

Size: 500mg



Specifications

CAS No:

78821-43-9

Formula:

$C_{28}H_{48}O_6$

Pathway:

Apoptosis

Target:

Apoptosis

Purity / Grade:

>98%

Solubility:

DMSO : ≥ 5 mg/mL (10.40 mM)

Alternative Names:

24-Epibrassinolide;B1105;BP55

Observed Molecular Weight:

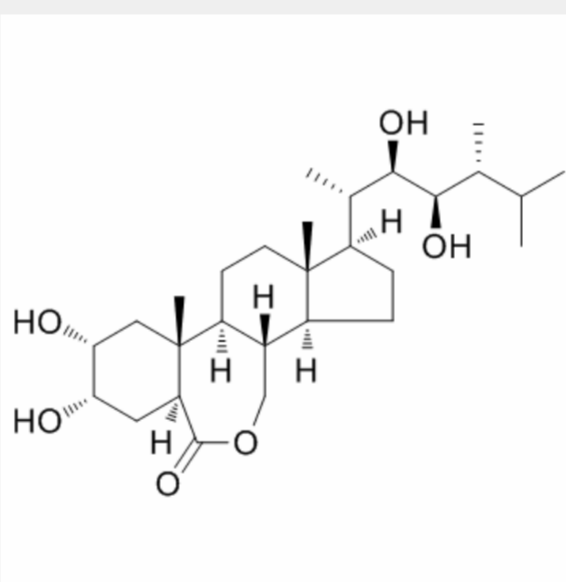
480.68

Product Description

Epibrassinolide is a natural brassinosteroid (BR) derivative, is a plant regulator with a similar structure to mammalian steroids. Epibrassinolide is a potential **apoptotic inducer** in various cancer cells without affecting the non-tumor cell growth.

IC50 & Target: Plant growth regulator, Apoptosis inducer^[1]

In Vitro: Epibrassinolide (EBR) is a biologically active compound of the brassinosteroids, steroid-derived plant growth regulator family. Cells are incubated with various doses (0-100 μ M) of Epibrassinolide for 24 or 48 h and cell viability is determined by MTT assay. Epibrassinolide induced cell viability loss in dose- and time-dependent manner compared to untreated samples in LNCaP and DU145 prostate cancer cells. Increasing concentrations of Epibrassinolide is more effective on LNCaP cell viability loss than DU145 cells suggesting that androgen-dependent cells are more sensitive to Epibrassinolide than androgen-independent prostate cancer cells. In further experiments, 25 μ M Epibrassinolide is selected due to its moderate cytotoxic effect on both cell lines. The effect of Epibrassinolide treatment is examined on cell proliferation by counting the cell number within 96 h. A higher and earlier inhibition of cell proliferation is observed in LNCaP than DU145 cells^[1].



All products are for RESEARCH USE ONLY. Not for diagnostic & therapeutic purposes!