

GW311616 (hydrochloride)

Catalog No: tcsc3127



Available Sizes

Size: 5mg

Size: 10mg

Size: 50mg

Size: 100mg



Specifications

CAS No:

197890-44-1

Formula:

$C_{19}H_{32}ClN_3O_4S$

Pathway:

Metabolic Enzyme/Protease

Target:

Elastase

Purity / Grade:

>98%

Solubility:

10 mM in DMSO

Alternative Names:

GW311616A

Observed Molecular Weight:

433.99

Product Description

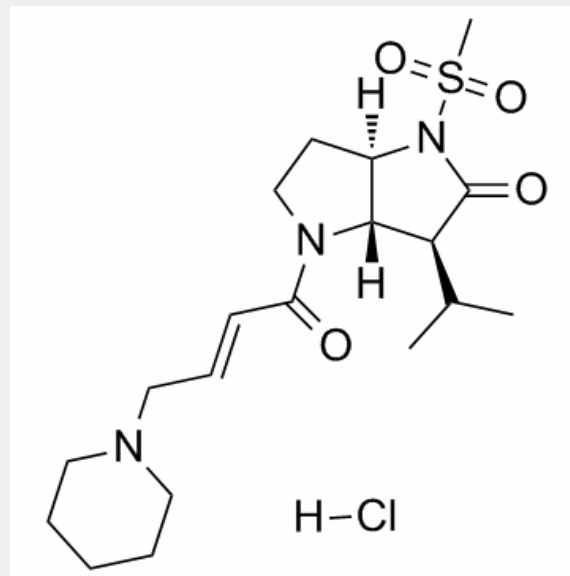
GW311616A(GW311616 HCl) is a potent, intracellular, orally bioavailable, long duration inhibitor of human neutrophil elastase(HNE) with IC₅₀ of 22 nM.

IC₅₀ value: 22 nM [1]

Target: neutrophil elastase

The HNE inhibitor GW311616A is selective over other human serine proteases (IC₅₀ values >100 μ M for trypsin, cathepsin G, and plasmin, >3 mM for chymotrypsin and tissue plasminogen activator). Acetylcholinesterase is not inhibited by GW311616A at 100 μ M. GW311616A is more potent than the trifluoromethylketone inhibitor ZD8321 (K_i=13 nM). GW311616A is orally bioavailable in rat, dog (Table 4) and hamster despite moderate to high plasma

clearance, which indicates that clearance is predominantly extrahepatic.



All products are for RESEARCH USE ONLY. Not for diagnostic & therapeutic purposes!