

# TAPI-1

**Catalog No: tcsc3108**



## Available Sizes

**Size:** 1mg

**Size:** 5mg

**Size:** 10mg



## Specifications

**CAS No:**

163847-77-6

**Formula:**

$C_{26}H_{37}N_5O_5$

**Pathway:**

Metabolic Enzyme/Protease

**Target:**

MMP

**Purity / Grade:**

>98%

**Solubility:**

DMSO :  $\geq$  31 mg/mL (62.05 mM)

**Observed Molecular Weight:**

499.6

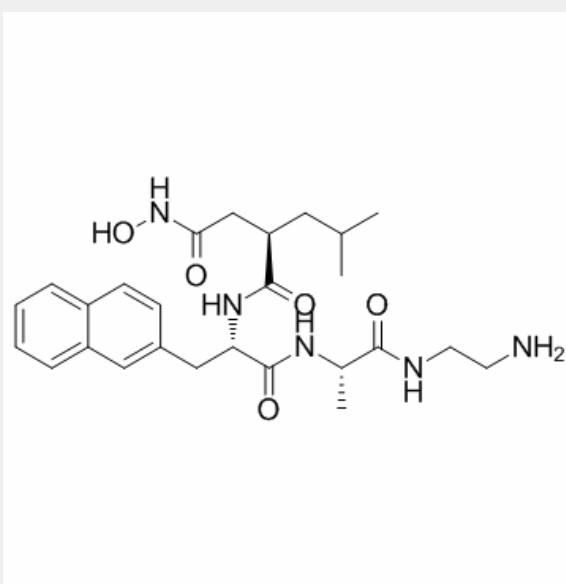
## Product Description

TAPI-1 is a specific TACE (TNF- $\alpha$ -converting enzyme) inhibitor.

IC50 value:

#### Target:

TAPI-1 inhibited LL-37-induced TGF- $\alpha$  production, EGFR activation and subsequent MUC5AC mucin production, whereas TGF- $\alpha$ -neutralizing antibody, but not AR- or HB-EGF-neutralizing antibody, inhibited LL-37-induced EGFR activation and subsequent MUC5AC mucin production in NCI-H292 cells [1]. Using the TNF- $\alpha$  converting enzyme (TACE) inhibitor, TAPI-1, TPA-stimulated TNF $\alpha$  shedding could be completely prevented in PKCepsilon transgenic mice and isolated keratinocytes [2]. Pretreatment with antibody against Fc $\gamma$ RII or with CD32 siRNA, p47(phox) siRNA, apocynin, N-acetylcysteine, tumor necrosis factor- $\alpha$  protease inhibitor 1 (TAPI-1) or TACE siRNA attenuated sLOX-1 release induced by CRP. CRP also elevated serum sLOX-1 levels in a rabbit model of atherosclerosis [3].



All products are for RESEARCH USE ONLY. Not for diagnostic & therapeutic purposes!